

Epiphany **M**

**M**

**M**

# Epiphany M Series

pour l'expérience de salon Luxe

**TAKARA  
BELMONT**



*Epiphany* **M**

**TAKARA  
BELMONT**



CONTENTS

# Epiphany M Series

A New Wave <sup>4</sup>

Luxe Chairs <sup>8</sup>

Arco <sup>10</sup> | Aria <sup>14</sup> | Figaro <sup>18</sup> | Optica <sup>22</sup>

Luxe Shampoo <sup>28</sup>

Largo <sup>30</sup> | Ombra <sup>38</sup> |  
Tierra & Aria <sup>44</sup> | Tierra & Optica <sup>46</sup>

Furniture Systems <sup>50</sup>

Faro <sup>52</sup> | Elena <sup>56</sup> | Luna <sup>60</sup>

Your Luxe <sup>64</sup>

*Cherish Expression*

Customise your Arco | Aria | Figaro | Optica <sup>66</sup>

Customise your Largo | Ombra | Tierra & Aria | Tierra & Optica <sup>67</sup>

Upholstery for All Chairs <sup>68</sup>

Options and Finishes for Elena | Faro | Luna <sup>70</sup>

Epilogue <sup>74</sup>

Sales <sup>80</sup> | 3 Year Warranty <sup>81</sup>

we made this wave

for *you* to ride





The tides have changed.

And while we all receive new opportunities only some will set out on new ventures, with great ideas to sail away on.

We've made a wave for you to ride, because you're not one to stand still. You are indeed the Nouvelle Vague.

You're adventurous, ambitious and able, you know what is right, and we think you deserve it all.

High Quality, Good Luxe ;)

**M**





Luxe 

*M*



# Arco

Salon Styling chair

**Features include :**

- brushaway holes
- upholstery fabric options
- contrast stitching option
- hydraulic base options
- U / L pump pedal options



H. 695 - 840 SeatH. 396 - 541 D. 675 W. 690 Wt. 28.2 (On SP-MRD-U base)



Arco with Amber Standard upholstery and Cream contrast stitching





Arco



# Aria

Salon Styling chair

**Features include :**

- Chrome armrests
- brushaway holes
- upholstery fabric options
- hydraulic base options
- U / L pump pedal options



H. 860 - 1005 SeatH. 460 - 605 D. 615 W. 570 Wt. 18.9 (On SP-MXA-U base)

Aria with Maroon Standard upholstery







Aria



# Figaro

Salon Styling chair

**Features include :**

- brushaway holes
- upholstery fabric options
- contrast piping option
- hydraulic base options
- U / L pump pedal options



H. 760 – 905 SeatH. 411 – 456 D. 655 W. 645 Wt. 30.2 (On SP-MSD-L base)



Figaro with Deep Green Standard upholstery and Black contrast piping





**Figaro**





# Optica

Salon Styling chair

**Features include :**

- brushaway holes
- stainless steel strip furnishing on rear
- upholstery fabric options
- contrast upholstery option
- contrast piping option
- hydraulic base options
- U / L pump pedal options



H. 751 - 896 SeatH. 396 - 541 D. 600 W. 605 Wt. 31.3 (On SP-MSD-L base)





# Optica

with Charcoal Standard upholstery and Maroon contrast upholstery





Optica with stainless steel strip furnishing





*M*





# Largo

All-in-one rear shampoo system

**Features include :**

- backrest massage option
- motorised, synchronised chair movements
- Black / Silver / White fibreglass body
- Black / White ceramic basin
- upholstery fabric options
- contrast stitching option
- Chrome furnishings



H. 990 D. 1330 – 1780 W. 715 Wt. 83.5 (90kg with massage function installed)





Largo



Largo with Stone Standard upholstery, White body and basin







## Largo

with synchronised, motorised backrest and legrest



# Ombra

All-in-one rear shampoo system

**Features include :**

- motorised legrest option
- Black / White body and basin
- upholstery fabric options
- contrast upholstery option
- contrast piping option
- Chrome furnishings

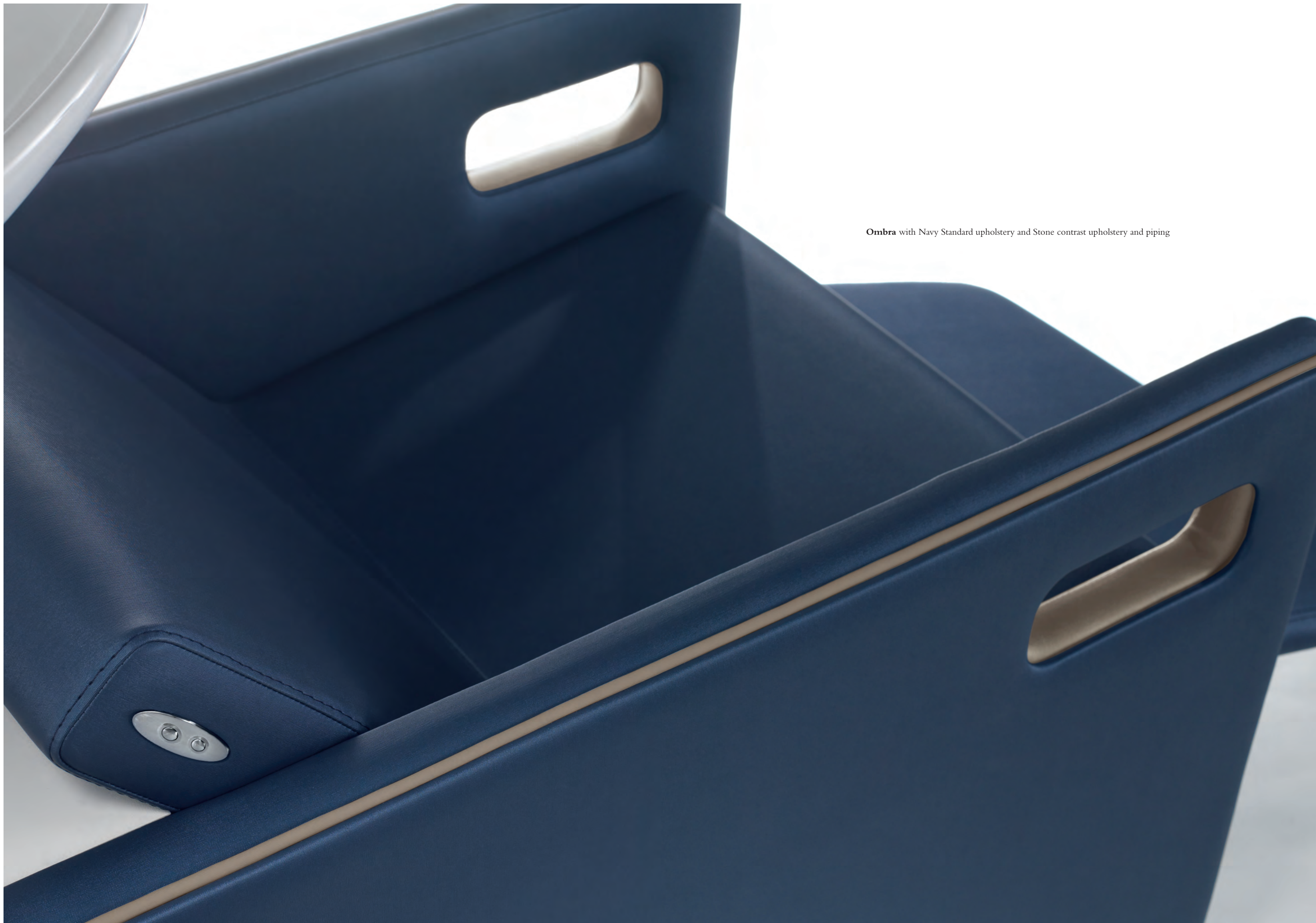


H. 1000 D. 1140 – 1610 W. 645 Wt. 70 (80.5kg with motorised legrest)

Ombra with Navy Standard upholstery and Ivory contrast upholstery and piping







**Ombra** with Navy Standard upholstery and Stone contrast upholstery and piping





## Ombra

with motorised legrest function



# Tierra & Aria

All-in-one rear shampoo system

**Features include :**

- Aria Styling chair
- Black / White body
- Black / White ceramic basin
- upholstery fabric options
- link-unit option to pair a second Tierra
- Chrome furnishings



H. 1000 D. 1160 W. 570 Wt. 39.1



Tierra & Aria with White body and basin



# Tierra & Optica

All-in-one rear shampoo system

**Features include :**

- Optica Styling chair
- Black / White body
- Black / White ceramic basin
- upholstery fabric options
- link-unit option to pair a second Tierra
- Chrome furnishings



H. 1000 D. 1130 W. 605 Wt. 42.5

Epiphany M Series ~ the Black basin





# Tierra & Aria







# Systems

*M*





H. 2000 D. 395 W. 750 Wt. 61 (60kg without footrest)



## Faro

Salon mirror station

**Features include :**

- chair-height mirror
- mirror-mounted shelf
- integral footrest option
- inset LED light option
- concealed shelving
- power socket
- finishing options



# Faro

with Natural laminate finish





# Elena

Salon reception desk and storage system

**Features include :**

- inset LED light option
- mirror facade option
- opaque glass screen option
- drawer handles option
- finishing options (combine 3 finishes)



H. 1190 D. 655 W. 1750 Wt. 129.9 (121.4kg without opaque glass screen)



Elena with Malt and Ash laminate combination finish



# Elena

in Malt and Ash laminate finishes, with Type A handles



# Luna

Salon reception desk and storage system

**Features include :**

inset LED light option  
mirror facade option  
opaque glass screen option  
drawer handle options  
finishing options



H. 1105 D. 550 W. 1000 Wt. 82.2 (71.4kg without opaque glass screen)







## Luna

in Carbon laminate finish, with Type A handles



Your Epiphany M products will be hand-finished and beautifully packed within 3 – 4 weeks of your order.

But not so fast, here are some delightful options to get you fizzing ~

Your Luxe



Customise your

# Arco | Aria | Figaro | Optica

## Luxe Options

**Arco**  
contrast stitching



**Figaro**  
contrast piping



**Optica**  
contrast piping | contrast upholstery



**All chairs**  
protective backrest cover: upholstered



transparent



**Paso**  
universal, Chrome footrest



## Base Options



pump pedal options: 'L' | 'U'

**SP-MRD**

Brushed Silver base with Chrome stem



SP-MRD-L with 'L' pump pedal  
SP-MRD-U with 'U' pump pedal

**SP-MSD**

Brushed Silver base with Chrome stem



SP-MSD-L with 'L' pump pedal  
SP-MSD-U with 'U' pump pedal

**SP-MXA**

Polished aluminium base with Chrome stem



SP-MXA-L with 'L' pump pedal  
SP-MXA-U with 'U' pump pedal

Customise your

# Largo | Ombra | Tierra & Aria | Tierra & Optica

## Luxe Options

**Largo** ■ ■ ■ body colour  
massage function | contrast stitching



**Ombra** ■ □ body colour  
motorised legrest | contrast piping | contrast upholstery



**Tierra & Aria / Optica** ■ □ body colour  
link unit



**Basins** Select the colour of your basin and stand; combination of different colours is available.  
basin options: Black / White



## Shampoo Chair Protection

**Largo | Ombra**

protective legrest cover: upholstered / transparent | protective backrest cover: upholstered / transparent

**Aria | Optica**

protective backrest cover: upholstered / transparent



# Upholstery for All Chairs

## Luxe Colours

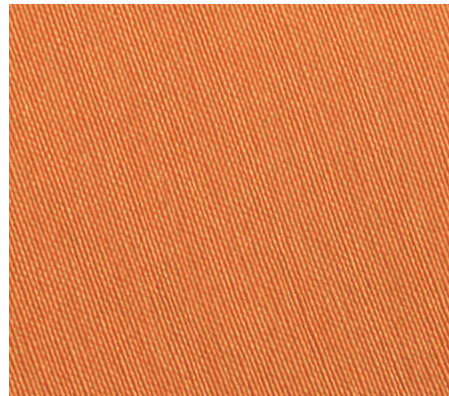
Ivory  
ST4004



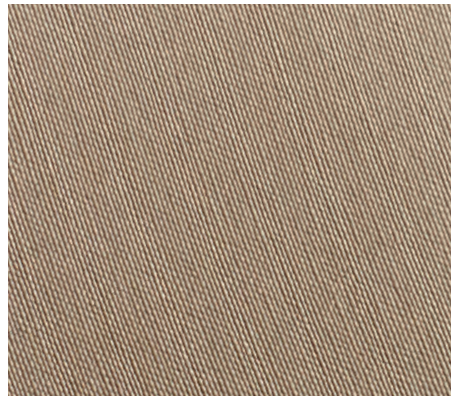
Cream  
ST1077



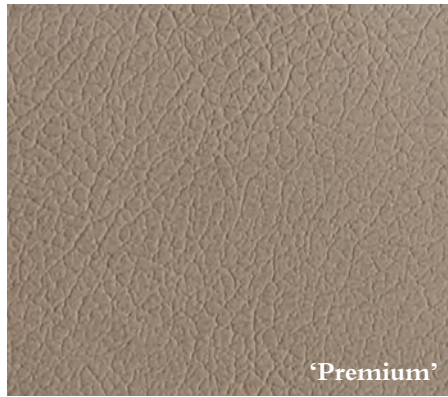
Amber  
ST0013



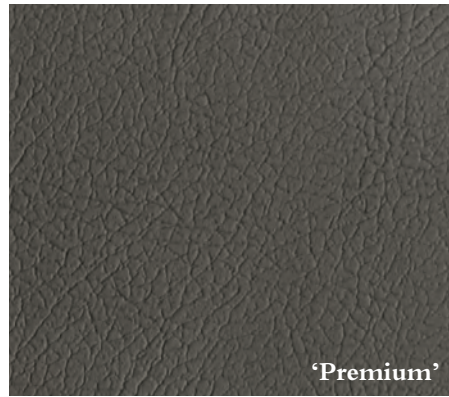
Stone  
ST0002



Oat  
SS77



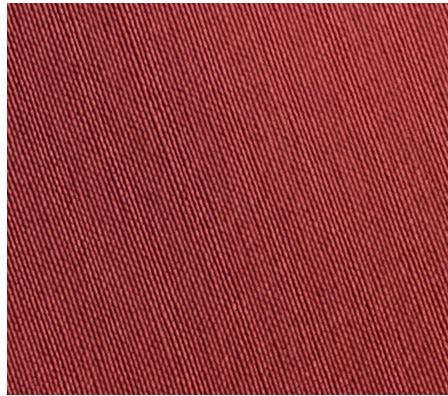
Grey  
SS82



Cinnamon  
SS87



Maroon  
ST2064



Brownie  
SS80

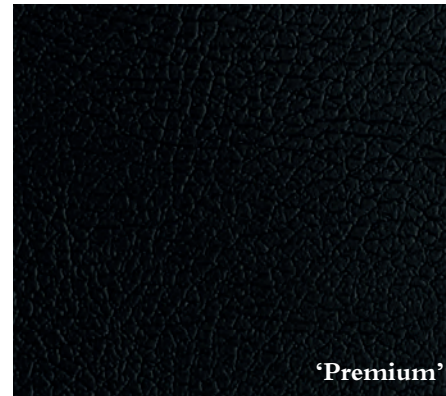


This selection of upholstery is available on all Epiphany M chairs and shampoo equipment ~

Select 2 colours from the same fabric range for **contrast piping** and **contrast upholstery**.



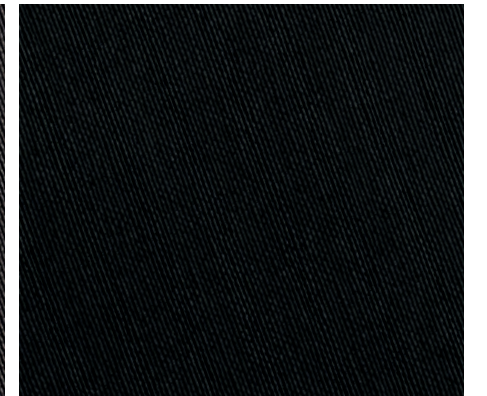
Pitch Black  
SS81



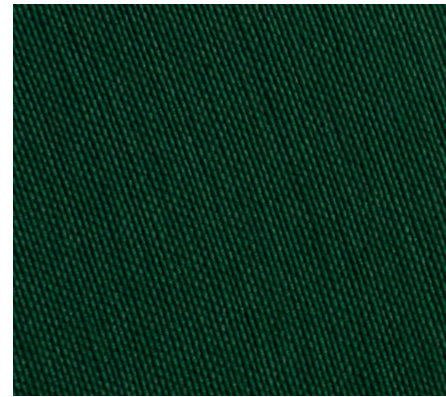
Charcoal  
ST9002



Midnight  
ST9001



Deep Green  
ST5063



Navy  
ST3007



## Luxe Stitch



Select any thread colour for your **contrast stitching**.



# Options and Finishes for Elena | Faro | Luna

This selection of laminate finishes is available on all Epiphany M furniture systems ~

**Elena : select up to 3 finishes**

Main cabinetry and shelving will be matched.

**Faro : select up to 2 finishes**

Main body and shelf can differ.

**Luna : select 1 finish**

Internal and external parts will match.



## Luxe Options

### Elena

inset LED light



opaque glass screen

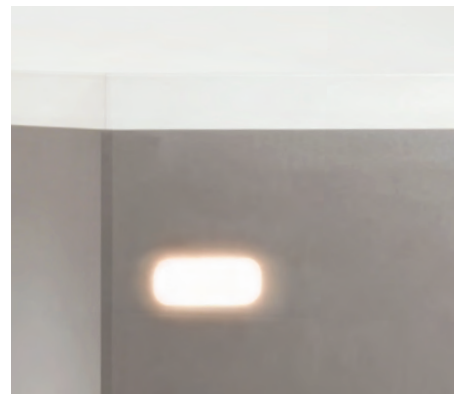


mirror facade



### Luna

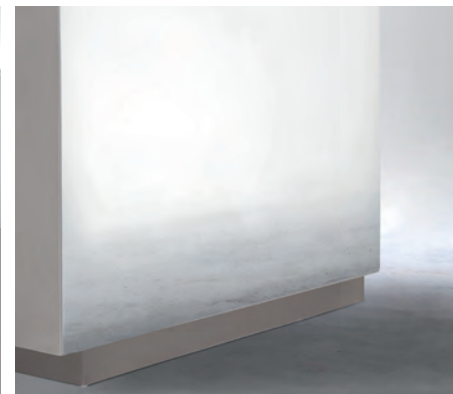
inset LED light



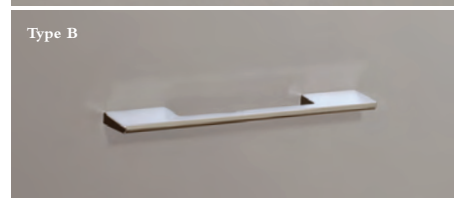
opaque glass screen



mirror facade



Chrome handle options for Elena and Luna



### Faro

integrated Chrome footrest



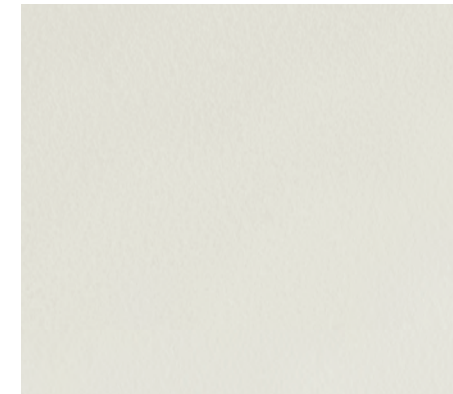
inset LED light



## Laminate Finishes

### White

S01



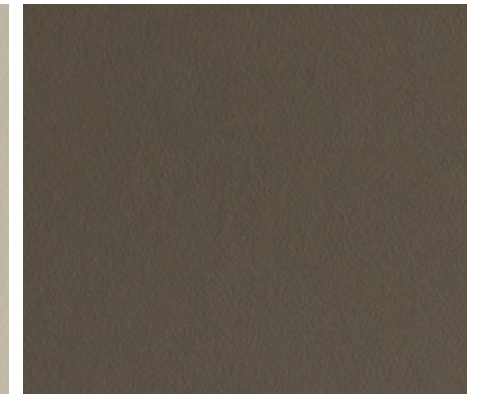
### Malt

S02



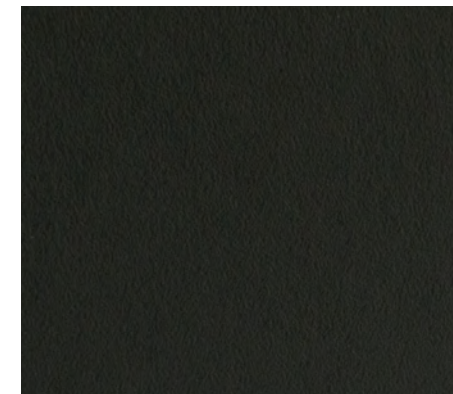
### Cocoa

S03



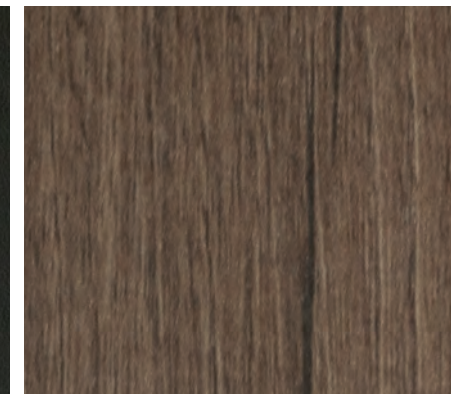
### Carbon

S04



### Brown Walnut

S05



### Natural

P11



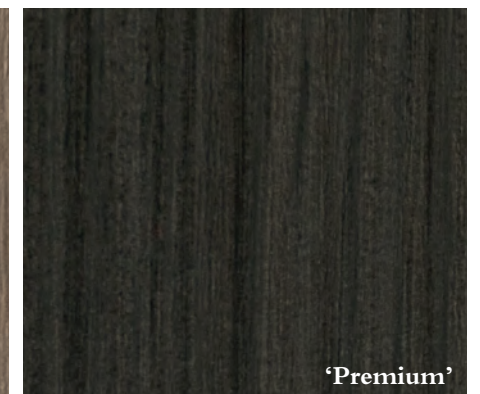
### Ash

P12



### Ebony

P13



'Premium'

'Premium'

'Premium'



*new*

*wave*



M

The most important thing for the people working in this industry is design.

I recognised this and struggled long time to realise 'designed' products in Takara Belmont. In 2014, we released the Epiphany Series for the European market – the design, assembling, materials were all sourced in Italy. We established a factory and office in North Italy, to realise our dream. After two years, I realised that we needed something new.

I was introduced to Pahi in 2014, who maintain a high standard of quality and our project became clear. How can we merge 'our design' with their production?

Fortunately, Jordi, the owner of Pahi accepted our collaboration idea and Massimo accepted our request to design the products. From Takara Belmont, Tom Ito assisted in the co-ordination of the products and project. I was so pleased by everyone's selfless contribution in such a short time.

We created these products for the 'Nouvelle Vague'. Because they have a strong desire to realise their new salon with products that can conceptualise their creativity. The name, 'Epiphany M' is for appealing to the 'Nouvelle Vague' because I believe, they are searching for something more.

I am writing this looking out the window at the River Thames. Today there are plenty of waves, sometimes created by the ships going up and down the river, sometimes by the gusty winds. *This is design.* Some of them are bigger than others. Everything has ride on the wave and we would want to be a good wave and which leaves an impact on the riverbed too.

Takashi Hoshina

Managing Director - Europe, Takara Belmont UK Ltd.

高野 拓

TAKARA  
BELMONT





When Massimo creates a new idea, he tries to find the “invisible line”. Design is not only about the final product but about hiding behind the existing line. People will always see the actual line, but we need to try to find the energy behind the line which leads to the invisible one.

With regards to Massimo’s work on Epiphany, he found a light from a small hole, which today is easily found in smart phones, but which inspired him to use the motif. From that point, he found new invisible lines for each of the products in the range and he hopes you like them as much as he does.

Production is not only “making products”, but making people and a culture. This is typically progressed in Japanese production. Pahi works the same way.

Pahi were very happy to work with us, because of our history and experience over the last 95 years. Pahi feels that they have added a new page into the Takara Belmont history book.

While working on the project, there were lots of discussions, so much so that there was no time for dinner. But this was fun work for all involved and great for our cultures.





made by **PAHI** for

 **TAKARA  
BELMONT**



Takara Belmont UK Ltd.

*takarahairdressing.eu*

#tbuk

**UNITED KINGDOM SALES**

t. +44 (0) 20 7515 0333

e. [hairdressing@takara.co.uk](mailto:hairdressing@takara.co.uk)

Belmont House,

1 Saint Andrews Way, Bow,

London E3 3PA

**UNITED KINGDOM GERMANY ITALY**

We have fully-equipped showrooms for your viewing pleasure and trying-out of equipment. The full range is on show and available for demonstration by friendly, knowledgeable staff.

Showroom viewings are by appointment only.

**M**

## 3 Year Warranty

**STANDARD LIMITED WARRANTY POLICY**

All Epiphany M products are guaranteed against mechanical, electrical and workmanship faults, under normal working conditions, for a period of THREE YEARS from date of delivery. Upholstery, paintwork, plating, natural wear/tear of all components are not warranted unless they are proven to be defective at time of delivery.

This guarantee shall become null and void if the damage and its consequences are due to improper manipulation of the product, or modifications to the product are carried out by persons not authorised by Takara Belmont (UK) Ltd.

**TAKARA  
BELMONT**







*M*



Epiphany **MI**