



WE LOVE BEAUTY & DESIGN




Products
"la più bella del reame"

Business
Barber Concept

Independent and Franchising
*The best international
salons selected for you*



A black and white photograph showing three people in conversation. On the left, a man with short, dark hair is looking towards the center. In the middle, another man with dark hair is looking towards the right. On the right, a woman with dark hair is looking towards the center. They appear to be in a professional or social setting. The background is blurred, showing other people and what might be a display or office environment.

Heart & Design

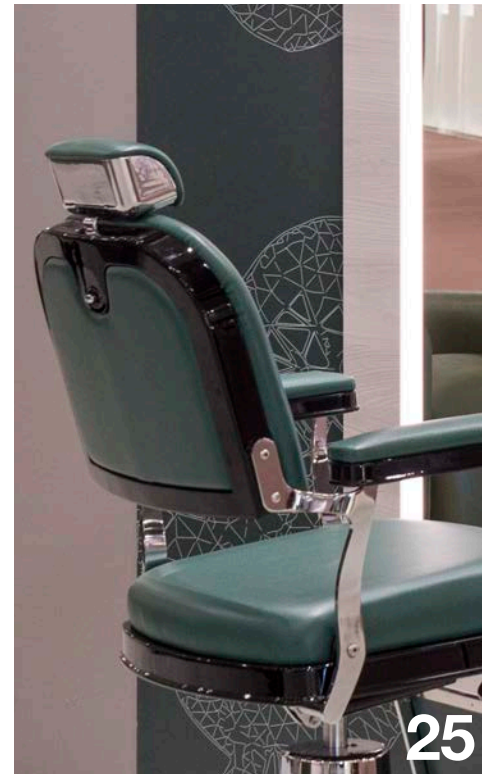
A OGNUNO IL SUO.
C'È CHI CI METTE CUORE,
IMPRENDITORIALITÀ ED
INTUIZIONE, C'È CHI CI
METTE GUSTO, SAGGEZZA
E DESIGN, C'È CHI CI METTE
ESPERIENZA, COERENZA E
PROFESSIONALITÀ.

E IL COCKTAIL PERFETTO È
FATTO.

DANILO E GUIDO MALETTI,
IMPRENDITORI "ILLUMINATI"
DA DECENNI LAVORANO CON I
PIÙ AFFERMATI DESIGNER DEL
MONDO, E DA QUALCHE ANNO
SI SONO "INNAMORATI" DI
ELISA GARGAN GIOVANNONI,
PARTNER DELLO STUDIO
GIOVANNONIDESIGN E ORA
ANCHE ARTDIRECTOR DI
MALETTI.

UN INCONTRO CHE HA
IMPRESSO UNA SVOLTA
ALL'INTERNO DELL'AZIENDA
QUASI CENTENARIA E CHE
DIMOSTRA UNA VOLTA DI PIÙ IL
FIUTO DEI SUOI DIRIGENTI E LA
VERSATILITÀ DEL SETTORE IN
CUI SI COLLOCA.

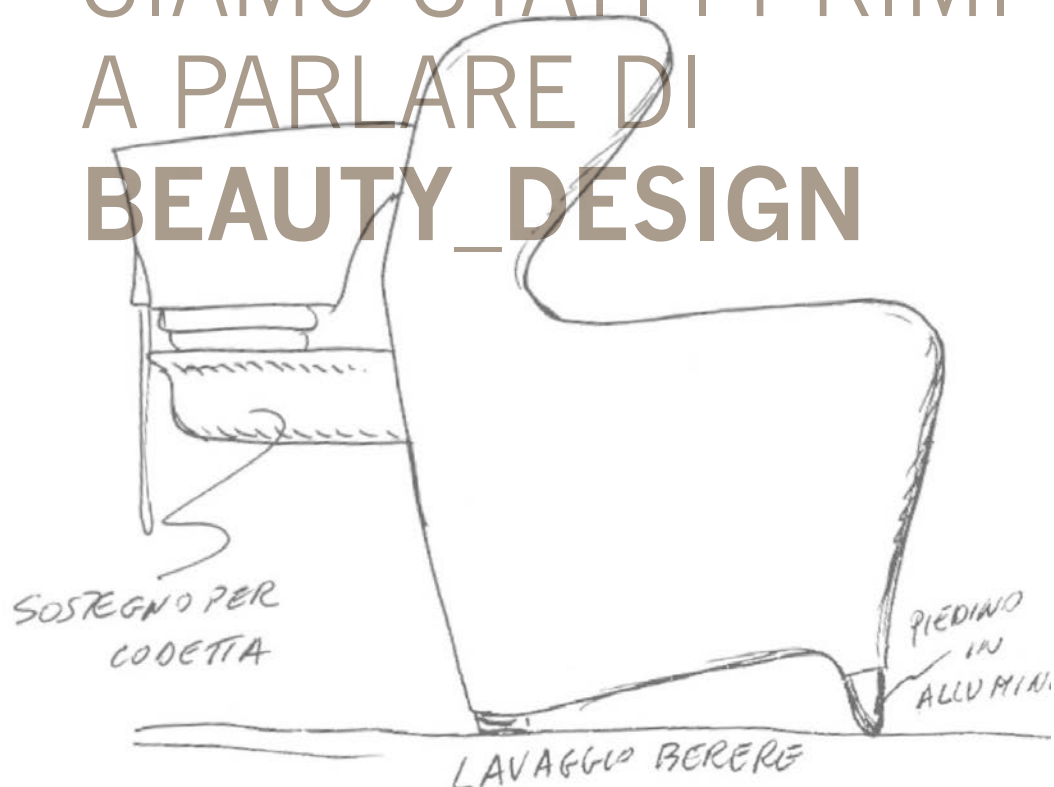
EACH TO HIS OWN.
SOME PUT THEIR HEART
INTO IT, THEIR INTUITION
AND BUSINESS SKILLS,
AND OTHERS PUT
THEIR TASTE, WISDOM
AND DESIGN, OR THEIR
EXPERIENCE, COHERENCE
AND PROFESSIONALISM. IT
ALL MAKES FOR A PERFECT
COCKTAIL. DANILO AND GUIDO
MALETTI, "ENLIGHTENED"
ENTREPRENEURS, HAVE BEEN
WORKING FOR DECADES WITH
LEADING DESIGNERS FROM
AROUND THE WORLD, AND A
FEW YEARS AGO THEY "FELL
IN LOVE" WITH ELISA GARGAN
GIOVANNONI, PARTNER OF THE
FIRM GIOVANNONIDESIGN AND
TODAY ALSO ART DIRECTOR
AT MALETTI. A MEETING THAT
HAS BROUGHT CHANGES TO
THIS ALMOST 100-YEAR OLD
COMPANY, DEMONSTRATING
ONCE MORE THE FLAIR OF
ITS DIRECTORS AND THE
VERSATILITY OF ITS BUSINESS
SECTOR.



Independent and franchising
*The best international
salons selected for you*

GROUP

SIAMO STATI I PRIMI A PARLARE DI **BEAUTY_DESIGN**



sketch by Elisa Giovannoni

4

ABBIAMO LANCIATO IL DESIGN NEL MONDO DEL BEAUTY CHIAMANDO PHILIPPE STARCK 30 ANNI FA, E DOPO DI LUI TUTTI I PIÙ FAMOSI DESIGNERS DEL MONDO: DIDIER GOMEZ, ROSS LOVEGROVE, STEFANO E ELISA GIOVANNONI, CHRISTOPHE PILLET, CLAUDIO SILVESTRIN.

WE WERE THE FIRST TO TALK ABOUT BEAUTY_DESIGN

WE LAUNCHED DESIGN IN THE WORLD OF BEAUTY 30 YEARS AGO BY INVITING PHILIPPE STARCK, AND AFTER HIM ALL THE MOST FAMOUS DESIGNERS IN THE WORLD: DIDIER GOMEZ, ROSS LOVEGROVE, STEFANO & ELISA GIOVANNONI, CHRISTOPHE PILLET, CLAUDIO SILVESTRIN.



DIDIER GOMEZ, ROSS LOVEGROVE, STEFANO E ELISA GIOVANNONI, CHRISTOPHE PILLET, CLAUDIO SILVESTRIN, PHILIPPE STARCK



SIAMO STATI I PRIMI A PARLARE DI SALONE_GLOBALE

VUOL DIRE DARE SPAZIO A PIÙ
ATTIVITÀ ALL'INTERNO DEL
SALONE: SALA VIP, ANGOLO
UOMO, SPAZIO BENESSERE,
MANICURE E PEDICURE,
RIVENDITA DI PRODOTTI, UN
ANGOLO DEDICATO AL
BABY-CARE

**WE WERE THE FIRST TO TALK
ABOUT GLOBAL_SALON**

*MEANS DEDICATING SPACE TO
DIFFERENT ACTIVITIES IN THE
SALON: VIP, MEN, WELLNESS,
MANICURE AND PEDICURE,
RETAIL AND BABY CARE*

5

E DI ECO_SALONE



AND THE ECO FRIENDLY_SALON

GREEN ADVICE
FOR THE SALON OF THE FUTURE

Maletti
GROUP
Leader in Beauty Design

GROUP

I NOSTRI PROFESSIONISTI SONO PRESENTI IN PIÙ DI 100 STATI NEL MONDO



80 anni

di esperienza nel settore del beauty-design fanno di Maletti l'azienda di riferimento per tutti gli hairstylist del mondo.

Perchè la nostra esperienza ci ha permesso di continuare a migliorare da un punto di vista progettuale, tecnologico e commerciale.

Possiamo fornire prodotti singoli, arredi completi, contract, con la capacità di garantire l'assistenza in ogni fase del progetto, dalla scelta della location, al progetto esecutivo, dall'assistenza agli impianti, alla scelta degli arredi. Siamo imbattibili sul fronte dei prezzi perchè il rapporto qualità/prezzo dei nostri prodotti è eccellente.

Possiamo percorrere qualsiasi alternativa progettuale e stilistica, dal salone giovane e economico al salone classico e di lusso, dal franchising alla scuola, dal salone globale a quello ecosostenibile a quello su misura.

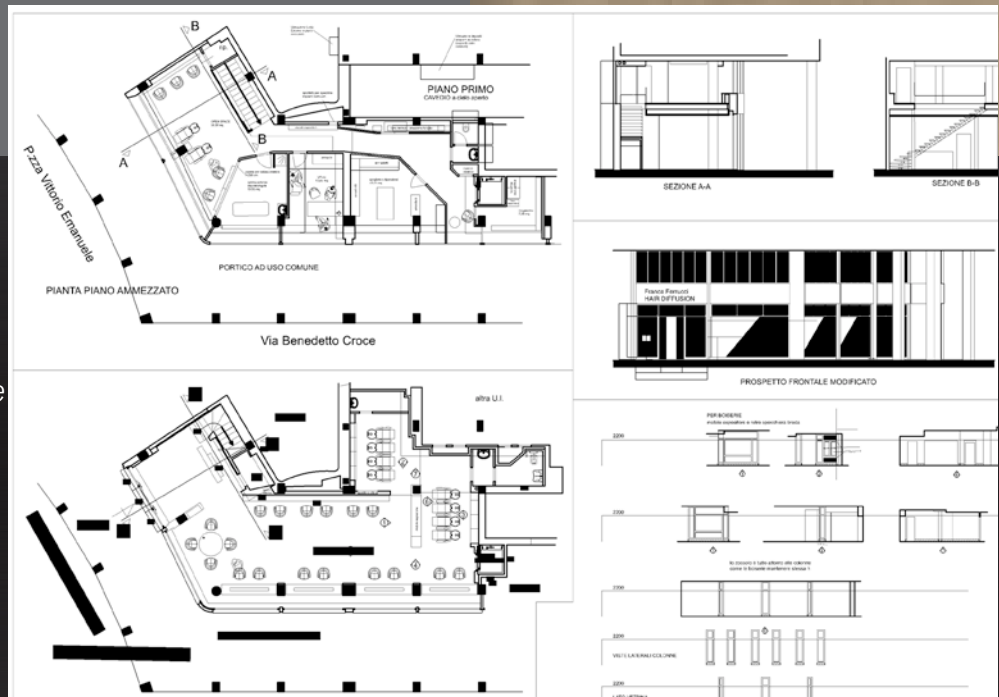
ABBIAMO TESSUTO UNA INCREDIBILE RETE DI RELAZIONI CHE CI CONSENTE DI ESSERE COLLEGATI NON SOLO VIRTUALMENTE. I NOSTRI PROFESSIONISTI SONO UOMINI E DONNE CHE SI SPOSTANO E LAVORANO A FIANCO DEI CLIENTI OFFRENDO PROFESSIONALITA', COMPETENZA E ASSISTENZA.

OUR PARTNERS ARE LOCATED IN MORE THAN 100 COUNTRIES
WE'VE DEVELOPED AN INCREDIBLE NETWORK OF RELATIONS WHICH CONNECTS NOT JUST VIRTUALLY. OUR PARTNERS ARE WOMEN AND MEN WHO MOVE WITH AND WORK ALONGSIDE THEIR CLIENTS PROVIDING ASSISTANCE AND CONSULTANCY IN A PROFESSIONAL MANNER.



80 YEARS

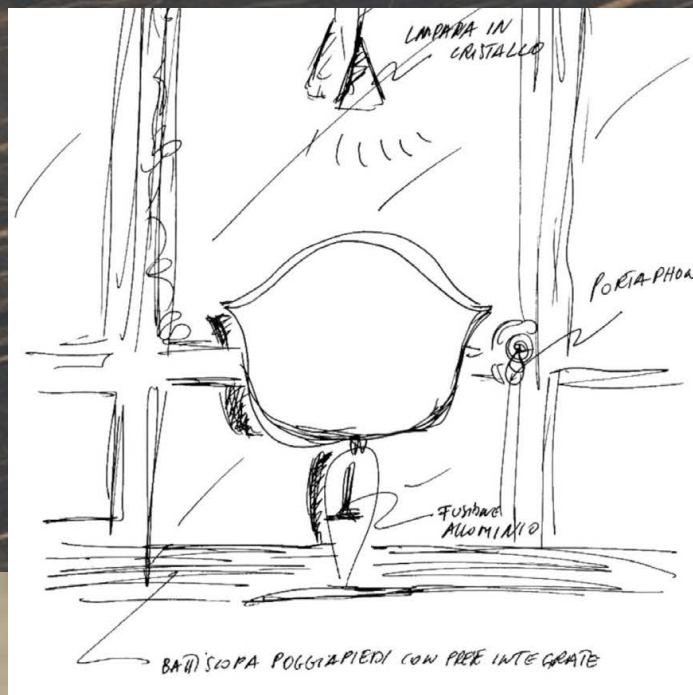
experience in the beauty design sector makes Maletti the go to company for hair stylists around the world. Our experience has enabled us to continue improving from a conception, technological and commercial point of view. We can supply single items, complete furnishing systems or contract all with the capacity to guarantee assistance in every phase of the project from the choice of the



Metal, black

WALLS

Paint, anthracite grey



**FURNITURE
FACADES**
Laminam, Cava

SHOWROOM



8

SHOWROOM NILO

WEDDING CORNERS, MAKE UP ZONES, BARBER SHOPS, WELLNESS AREAS, NAIL STATIONS

EVERYTHING YOU NEED TO MAKE YOUR SALON THE PLACE WHERE
BEAUTY AND WELL-BEING RADIATE FROM EVERY CORNER

Presso la sede di Scandiano è stato inaugurato il nuovo showroom di Nilo, uno spazio che raccoglie la produzione di eccellenza del Brand: un luogo dedicato alla bellezza ed alla cura della persona, con diverse ambientazioni a tema. Sarà anche possibile visitare il mondo Bohème, dove la collezione è presentata in diverse configurazioni e colori.

Located in Scandiano, the new showroom Nilo will be inaugurated. It's a space that gathers the best production excellence of the Brand, the place dedicated to the personal care with thematic environments. It will be possible to visit the Bohème world where the collection is presented in different configurations and colours.





QUEST'ANNO
MALETTI GROUP
SI VUOLE
DIFFERENZIARE
CON FRIZZANTE
NOVITÀ: **DESIGN,**
INTESO
COME NUOVI
PRODOTTI,
NUOVI
MATERIALI,
NUOVI
CONCETTI.

THIS YEAR MALETTI
GROUP WOULD LIKE TO
DIFFERENTIATE WITH
BREAKING NEWS. **DESIGN**
WITH ITS NEW PRODUCTS,
NEW MATERIALS AND NEW
CONCEPTS

OGGETTI/OBJECTS

lavatesta/wash unit **CARROSSE**
mensola/styling units **ROUND**
poltrona/chair **LORD WELLINGTON**
mensola/styling units **OBLO'**
poltrona/chair **GREEN HUG**
poltrona/chair **ALU CHAIR**



NEW PRODUCTS



OGGETTI/OBJECTS

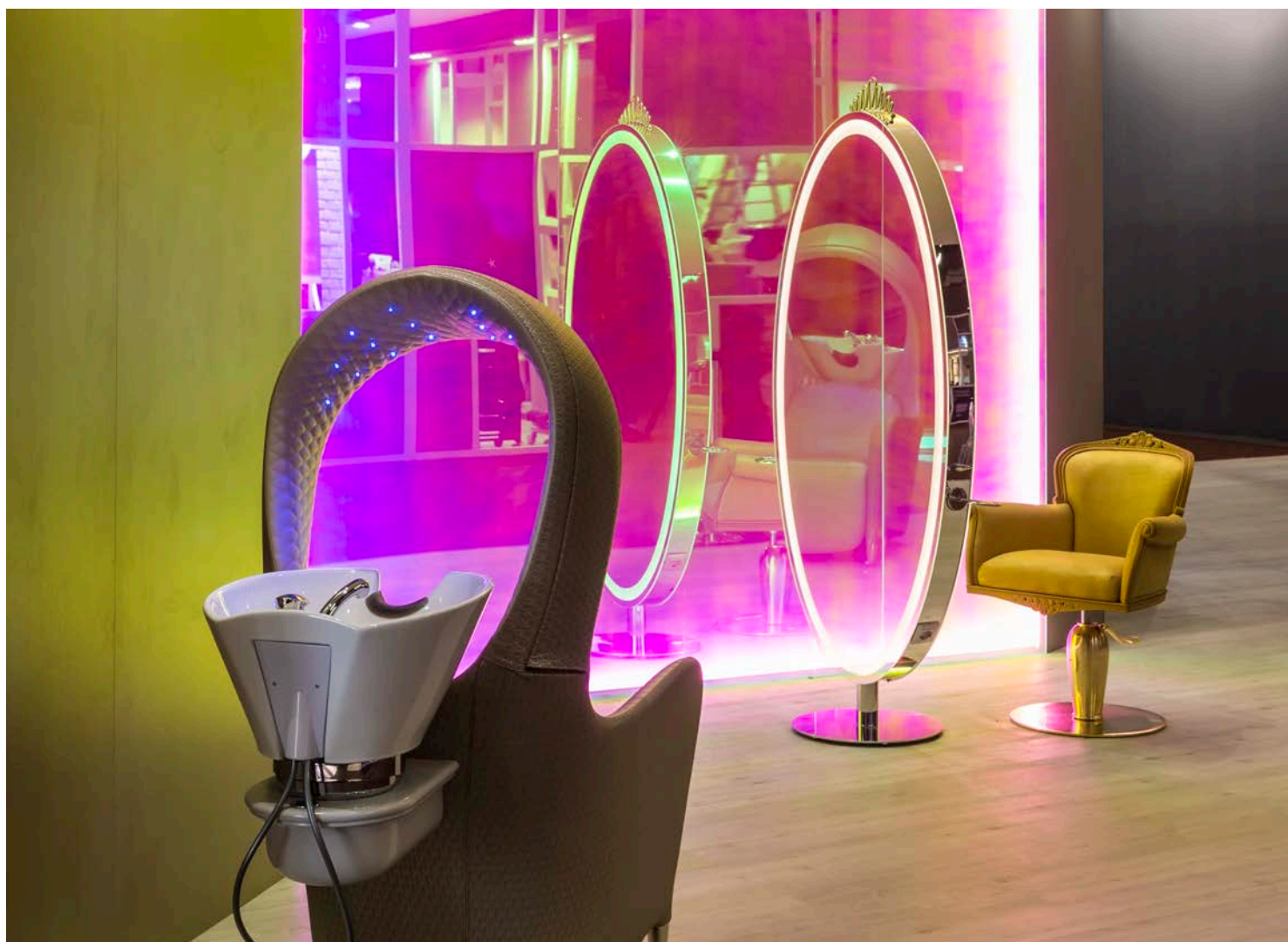
- mensola/styling units **GRISETTE**
- poltrona/chair **MUSETTE REC.**
- lavatesta/wash unit **CARROSSE**
- mensola/styling units **GRIMILDE**
- poltrona/chair **LA PIU' BELLA DEL REAME**

BOHÈME

LA COLLEZIONE BOHÈME THE BOHÈME COLLECTION

si estende con due nuovi prodotti di ispirazione classica: “La più bella del reame”, poltrona confortevole e dal forte impatto e “Grimilde, specchio delle mie brame”, specchiera da parete freestanding, dalla caratteristica forma ovale, ispirata al mondo delle fiabe.

was enlarged with the new products inspired by the classic: a comfortable and standing-out “La più bella del reame” armchair and “Grimilde, specchio delle mie brame”, the oval-shape wall and self-standing mirror inspired by a fairy world.



NEW PRODUCTS

LA COLLEZIONE BOHÈME

Eccola. La nuova nata della linea Bohème. Si chiama proprio "La più bella del reame" a scanso di equivoci sul pensiero dello staff creativo della Maletti, rispetto alla nuova poltrona disegnata da Elisa Giovannoni. Imponente, attraente, quasi un pezzo da collezione.

THE BOHÈME COLLECTION

And here She is, the talest entry to the Bohème range. And the name is exactly that "La più bella del reame", given to the new chair designed by Elisa Giovannoni by Maletti creative staff. Majestic, attractive, regal, pratically a collector's item.

"O
SPECCHIO,
SPECCHIO
DELLE MIE
BRAME,
CHI E'
'LA PIU'
BELLA DEL
REAME'?"

" MIRROR, MIRROR
ON THE WALL.
WHO IS THE
FAIREST OF ALL? "



14

OGGETTI/OBJECTS

mensola/styling units **GRIMILDE**
poltrona/chair **LA PIU BELLA DEL REAME**

interview with Elisa Gargan Giovannoni, art director Maletti Group



NEW PRODUCTS



The old smoke collection

Con un antico nickname di Londra "The old smoke" abbiamo presentato la nuova collezione ispirata ai salotti situati nei club londinesi. La poltrona con un soffice cuscino reversibile è presentata nella versione in pelle naturale alla quale verrà abbinato il lavaggio dai caratteristici bracciali.

an
products is
by the combination of
is unusual materials
ics with simple and
f design that can be
different environments.
an "Old" is the
can be combined with
fairs and styles
ring personality.
The proposal the new
wanted, it is covered
all of the high
can finally have most
colour even

club OLD SMOKE



THE OLD SMOKE

Con un antico nickname di Londra "The old smoke" abbiamo presentato la nuova collezione ispirata ai salotti dei club londinesi.

"Lord Wellington", poltrona con un soffice cuscino reversibile, è presentata nella versione in pelle naturale, alla quale verrà abbinato il lavaggio "Lord Nelson" dai caratteristici braccioli.



THE OLD SMOKE

Referring to the old nickname of London "The old smoke" we have presented the new collection inspired by the London living rooms.

The armchair "Lord Wellington" with the soft cushion is presented with the natural leather and transfers its particular characteristics of the armrests to a new wash, "Lord Nelson".



OGGETTI/OBJECTS

lavatesta/wash unit **LORD NELSON**
poltrona/chair **LORD WELLINGTON**
mensola/styling unit **OVAL**



NEW PRODUCTS

IL NUOVO LAVATESTA
COLORATO

THE NEW **COLOURED** WASH UNIT
BY ELISA GIOVANNONI

ALU GREEN

Il salone non è
mai stato così
SMART
- Now salons can be
SMARTER
p-m-d





ALU GREEN COLLECTION

ALU GREEN COLLECTION

si presenta con un nuovo lavaggio, "Alu Wash Stand", con una ceramica ampia e funzionale mentre le specchiere in metallo dal design minimalista sono caratterizzate dal materiale del piano di appoggio coordinato al rivestimento a parete.

Saranno presentate infatti con un rivestimento ceramico ad alta resistenza agli acidi delle tinture e alle abrasioni che permette di riprodurre numerosi effetti materici di grande impatto.

is presented with "Alu Wash Stand", the new wash and the extensive and functional sink, while the metal mirrors in minimalistic style are characterized with the support plane having the same coating as the wall.

Indeed they will be presented with the ceramic coating resistant to colours and abrasion that allows to reproduce various materials in the big scale.



OGGETTI/OBJECTS

lavatesta/wash unit **ALU WASH STAND**
poltrona/chair **ALU CHAIR**

NEW PRODUCTS

GREEN FIRST

GREEN FIRST COLLECTION THE GREEN FIRST COLLECTION

Anche per questa famiglia sono stati previsti nuovi prodotti, che rinnovano ed estendono la linea. Una nuova famiglia di specchiere, che per ora sono presentate in due configurazioni ovale e quadra, con luce led perimetrale e diverse finiture per la parte in legno. Viene anche proposta una nuova versione della poltrona Boomerang, in versione imbottita.

New products were expected for this collection as well, the products that renew and extend the line. The new family of mirrors are now presented in two versions: oval and square shapes with the perimetric light and different finishings in wood. The new version of the upholstery Boomerang will be presented as well.

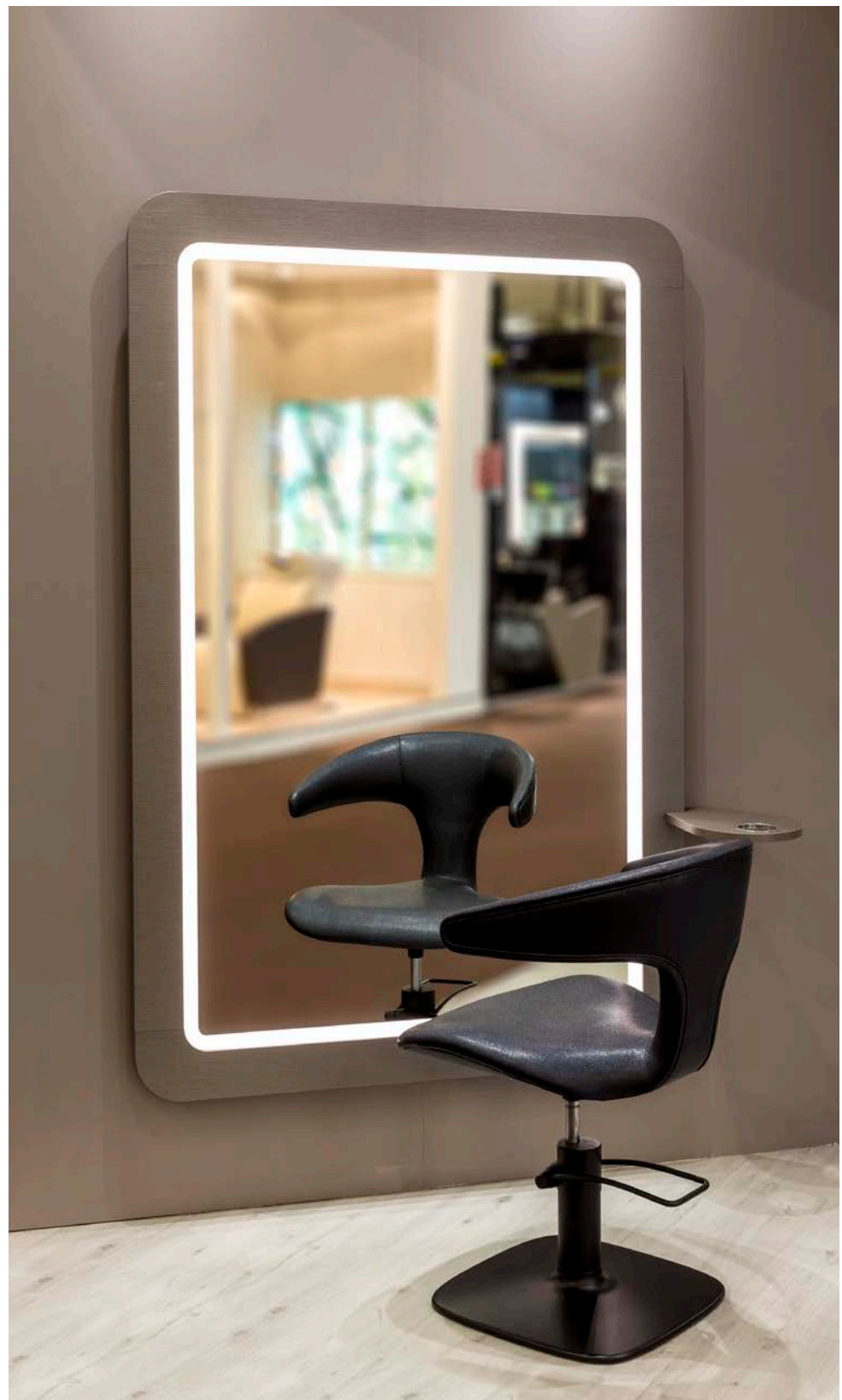
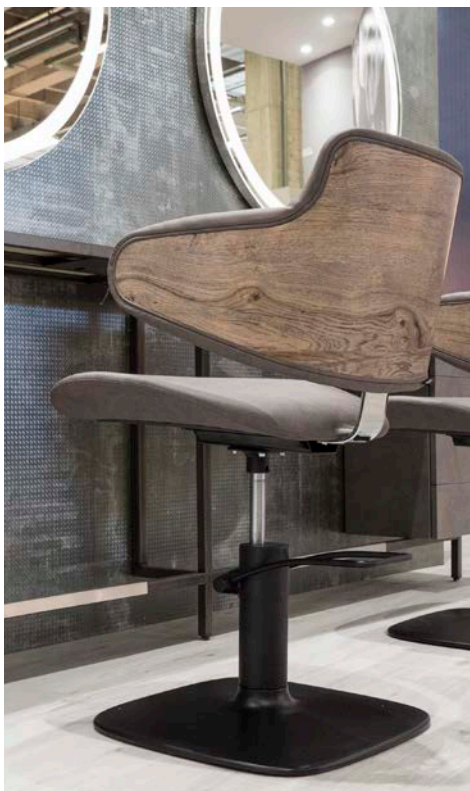
Greenfirst Collection

New products were expected for this collection as well, the products that renew and extend the line. The new family of mirrors are now presented in two versions: oval and square shapes with the perimetric light and different finishings in wood. The new version of the upholstery Boomerang will be presented as well.



OGGETTI/OBJECTS

lavatesta/wash unit **GREEN FIRST CLASS**
mensola/styling units **QUADRA**
poltrona/chair **BOOMERANG SOFT**
poltrona/chair **GREEN HUG**





**Dal 1999 Uki
rivoluziona il mondo
degli accessori
elettrici per capelli.**

*Since 1999 Uki has
been revolutionising
the world of electric
hair tools.*

—
22



QUALITY & DESIGN

THE ITALIAN SENSE OF BEAUTY

Giovane, dinamica e frizzante: sono queste le parole chiave di UKI. Un'ampia linea di prodotti altamente tecnologici pensati per i professionisti del settore, con una cura particolare per l'estetica: colori accesi e silhouette moderne e accattivanti li rendono unici nel loro genere.

Young, dynamic and fizzy: these are the key words which describe UKI the best. A wide range of highly technological products designed for professionals, with a particular care for design: bright colors, modern and attractive shapes make UKI hair styling tools unique in their kind.



BUSINESS

ZERBINI 1906





WELLNESS FOR MAN

Maletti Group rilancia lo storico marchio torinese F.lli Zerbini presentando Zerbini 1906, la nuova poltrona barber disegnata da Elisa Gargan Giovannoni, il cui design si ispira a uno dei modelli più famosi della storica azienda italiana. Questa postazione vintage, la cui estetica viene valorizzata dal contrasto tra la seduta in skay e i dettagli in fusione di alluminio, permette una posizione altamente confortevole per il cliente ed al contempo ergonomica per l'operatore. L'innovazione tecnologica e il restyling attento alle moderne necessità la rendono il perfetto strumento per barber shop, beauty care e make up.

Maletti Group is honored to relaunch the historical brand F.lli Zerbini 1906, a new barber sofa designed by Elisa Gargan Giovannoni, who was inspired by one of the most famous products of the renowned Italian firm. This vintage seat, whose esthetics is enhanced by the contrast between its leather cloth sitting and its aluminium details, allows a pleasant position for the customer while guaranteeing ergonomic comfort for the operator. A full restyling to meet today's customer needs together with its technological innovations managed to transform this sofa into perfect tool for every barber, beauty care and make up shop.



WELLNESS



—
26

S O P R A N O

MULTIFUNCTIONAL WORKING STATION



NILO S.R.L.

VIA ARMANI, 1A . 42019 . SCANDIANO (RE) . ITALIA

TEL +39 0522 7631 . FAX +39 0522 766 676

info@nilo-beauty.com

www.nilo-beauty.com

SOPRANO e' l'ultima nata nel mondo del Multifunzione di eccellenza. Brevettata, con design e funzionalita' uniche al mondo, e' una poltrona attrezzata versatile che permette di realizzare nella stessa postazione, oltre a Make Up, Trattamenti-Viso, Manicure e Pedicure, anche Hair-Washing e Hair-Styling, aggiungendo semplicemente la Colonna, il Lavaggio e la Specchiera. Versatilità, unicità senza eguali, solo sognate prima, ed ora difficilmente ripetibili, sono state raggiunte solo con la nostra esperienza, unica al mondo.

SOPRANO is our last born for the Multifunction world-of-excellence. Patent, with unique design and function, SOPRANO is a very versatile multi-equipped chair that allows to perform multiple services in the same place, like Make-Up, Facial, Manicure and Pedicure, beside Hair-Washing and Hair-Styling just adding Wash-Column and Mirror. Versatility, uniqueness without equals, just dreamed about and now unrepeatable: all of these features have been reached just with our experience, unique in the world.



INDEPENDENT



SALONS





30

GIANNI MARCON
SEREGNO, ITALY

STYLING CHAIRS

Eufemia
Mimi
Musette

WASH UNITS

Maria C.
Bergère

STYLING UNITS

Breda Wall
Rodolfo Double

TECHNICAL TABLE

Benoit

BACKWASH CABINET

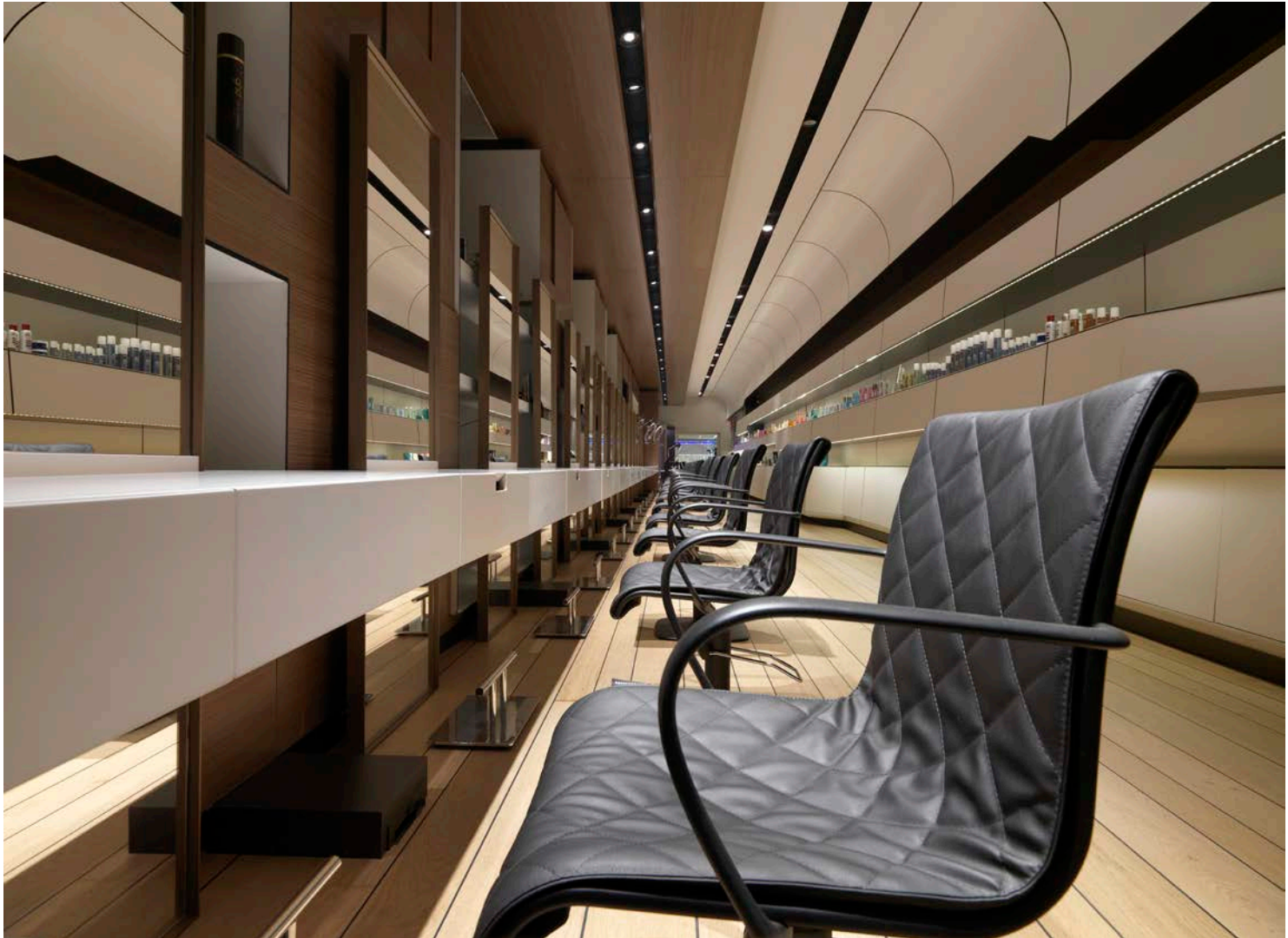
Cafè Momus

MIRROR

Marcello







32

BLEND
MILANO, ITALY

STYLING CHAIRS
Alu Chair

WASH UNITS
Green First

FOOTREST
TT





34

BLEND
MILAN, ITALY

**STYLING CHAIR
FOR MEN**
Zerbini 1906

WASH UNITS
Déluge I

WASH UNITS
Green First



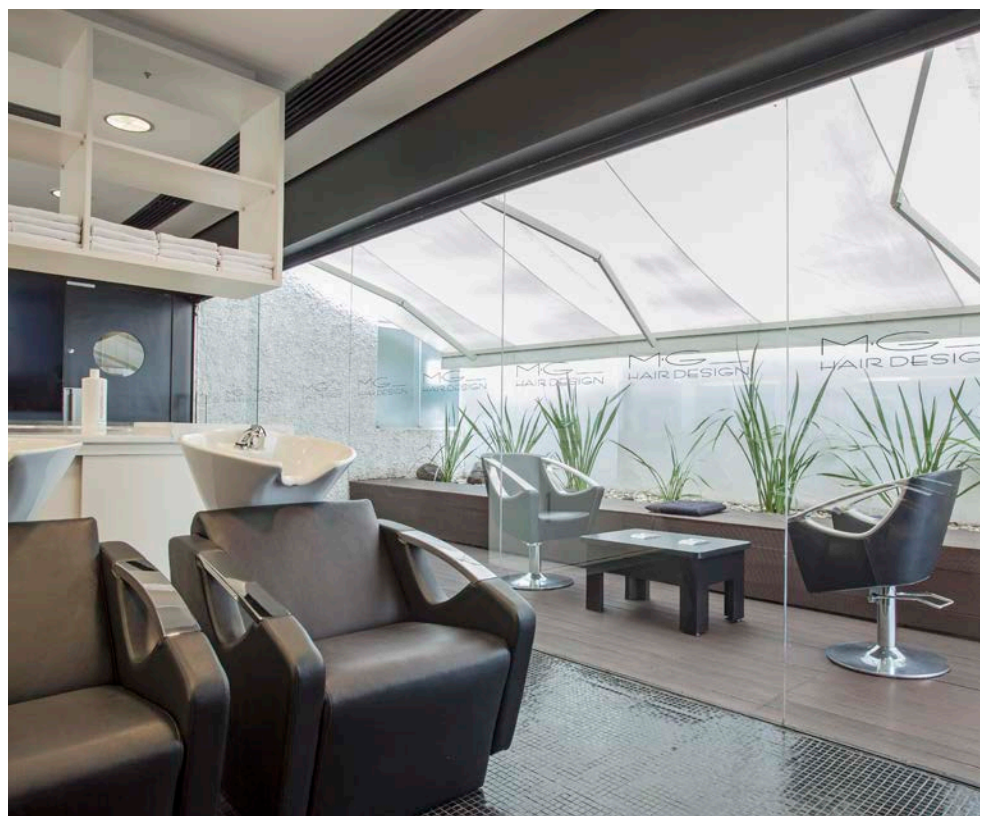


36

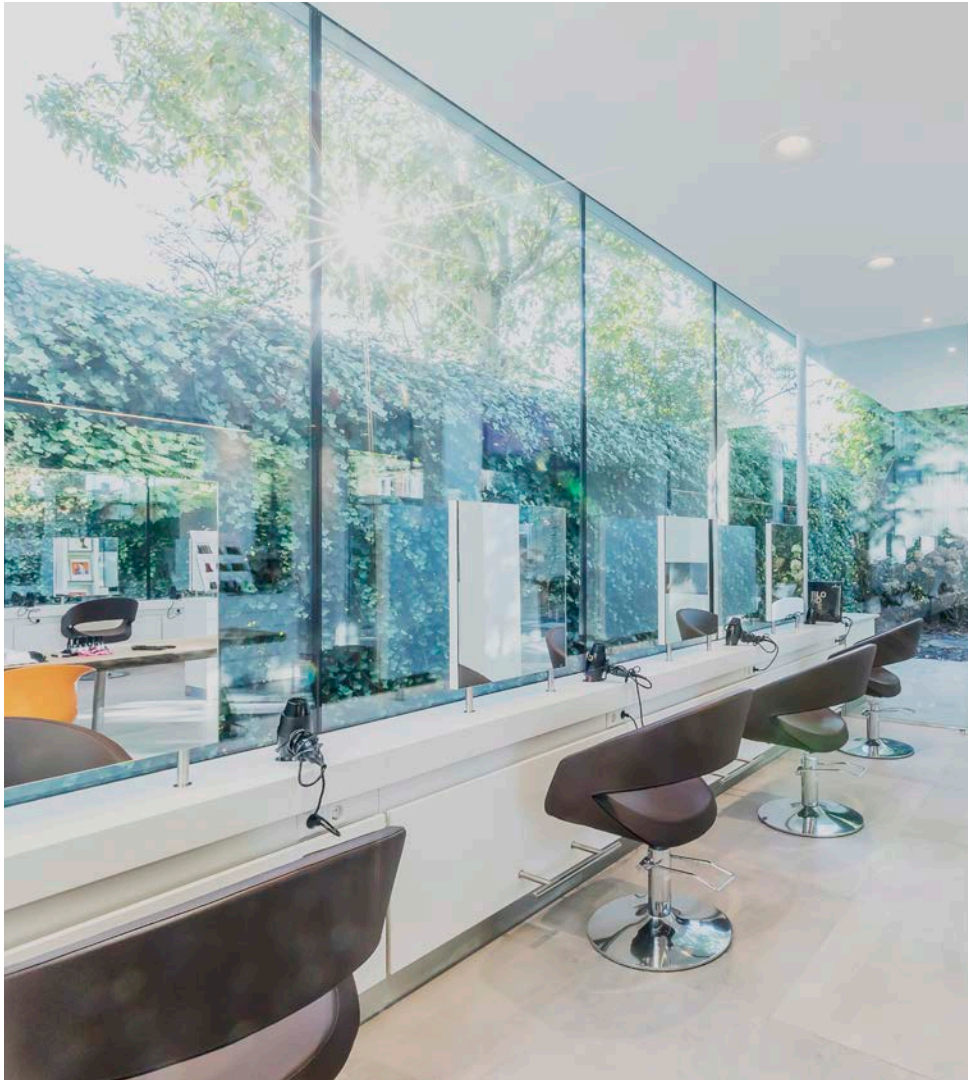
MG HAIR DESIGN
SÃO PAULO, BRAZIL

STYLING CHAIRS
Angelina

WASH UNITS
Sky Wash







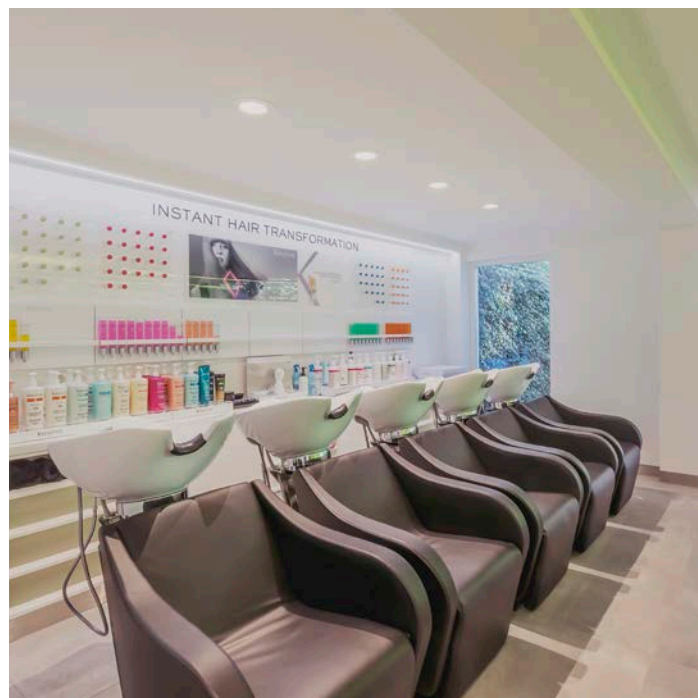
38

MICKEL SCHRAVEN HAIRDESIGNERS ULVENHOUT, HOLLAND

STYLING CHAIRS
Caruso

STYLING CHAIR
FOR MEN
Zeus

WASH UNITS
330







40

EGGER
LUSTENAU, AUSTRIA

WASH UNITS
Madre
Specific Hair Water System

STYLING UNITS
Lioness Rec.







42

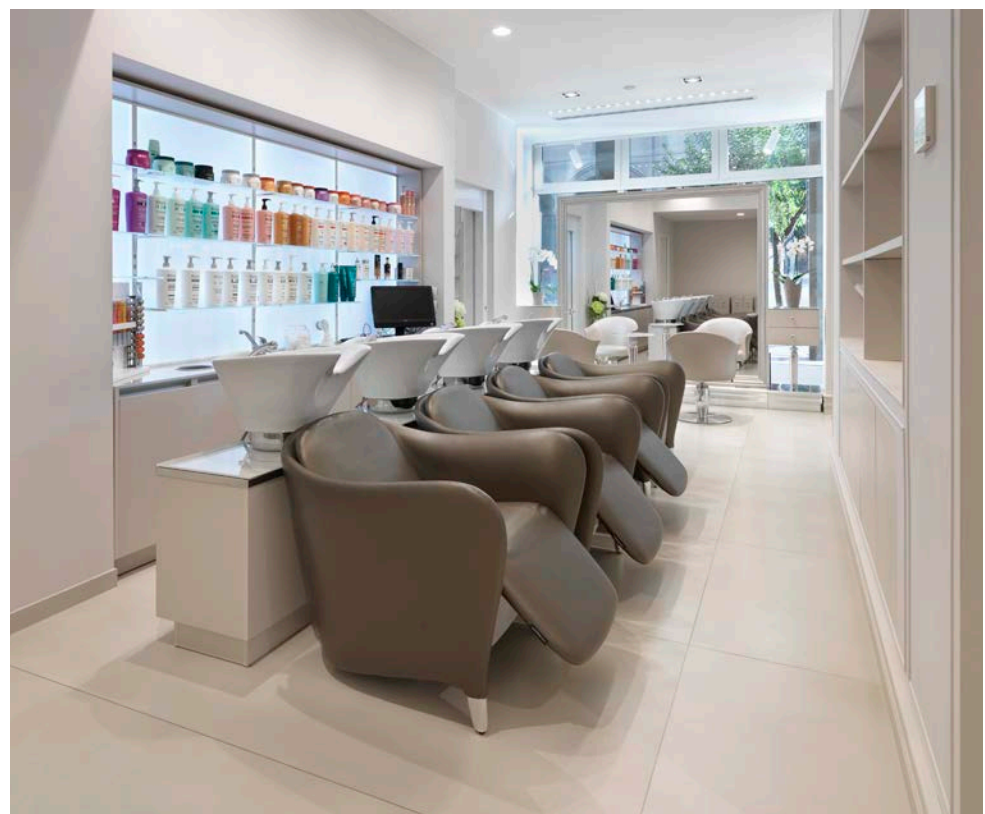
FRANCA FERRUCCI
PISA, ITALY

STYLING CHAIRS
Eufemia
Mimi

WASH UNITS
Maria C.

STYLING UNITS
Breda Wall
Rodolfo Double
Mignon
Mignon Table

TECNICAL TABLE
Colline







44

FRANCA FERRUCCI
PISA, ITALY

STYLING CHAIRS
Musette
Eufemia

WASH UNITS
Bergère

STYLING UNITS
Grisette Wall
Rodolfo Double
Mignon





—
46

GOLDEN MÉLANGE KEMPTEN, GERMANY

STYLING CHAIRS
Striptease

**STYLING CHAIR
FOR MEN**
Zeus

WASH UNITS
330

BACKWASH CABINET
Retro Light



Hairdreams Hairdreams

ÖFFNUNGSZEITEN
SCHWEINERBARUNG
10:00 - 18:00
19:00 - 20:00
18:00 - 14:00





48

ALANAKRISTIAN
 SYDNEY, AUSTRALIA

STYLING CHAIRS
 Versailles
 Pompadour

STOOL
 Sgabi

WASH UNITS
 Green Star Class

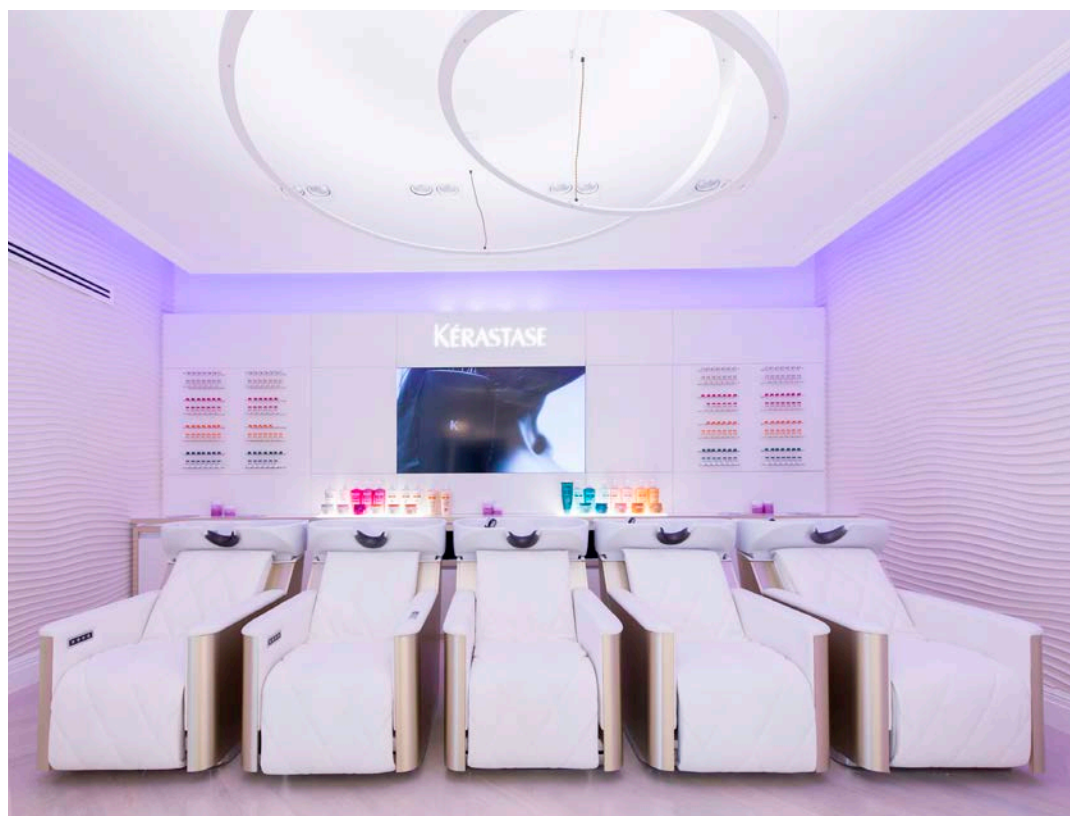
STYLING UNITS
 Louis II

TROLLEY
 Manhattan

TECHNICAL TABLE
 Dauphin

MIRROR
 Dauphin Mirror

FOOTREST
 Hall







50

SALON'S BEAUTY CLUB RIGA, LATVIA

STYLING CHAIRS
Eco Fun Chair

FOOTREST
Madame

TROLLEY
Manhattan

WASH UNITS
330





SALON'S
BEAUTY CLUB

SALON'S

SALON'S



52

CAPSULE MOSCOW, RUSSIA

STYLING CHAIRS
Caruso

FOOTREST
Costantino

TROLLEY
Manhattan

WASH UNITS
Egg





Загрузите в App Store

Google Play

Scissorhands

CAPSULE

- Скачайте приложение «Капсула»
- Запишитесь на парикмахерские услуги или маникюр в удобное для вас время
- Оплачивайте услуги банковской картой, подключенной к приложению «Капсула», в один клик

capsule-capsule.com





54

ROYAL BEAUTY&SPA
PRAGUE, CZECH REPUBLIC

STYLING CHAIRS
Musette

WASH UNITS
Bergère

STYLING UNITS
Breda Wall







56

STUDIO W CRYSTAL
PARANÀ, BRAZIL

STYLING CHAIRS
Relookage
Paloma
Lioness Rec

**STYLING CHAIR
FOR MEN**
Sigma

WASH UNIT
330







58

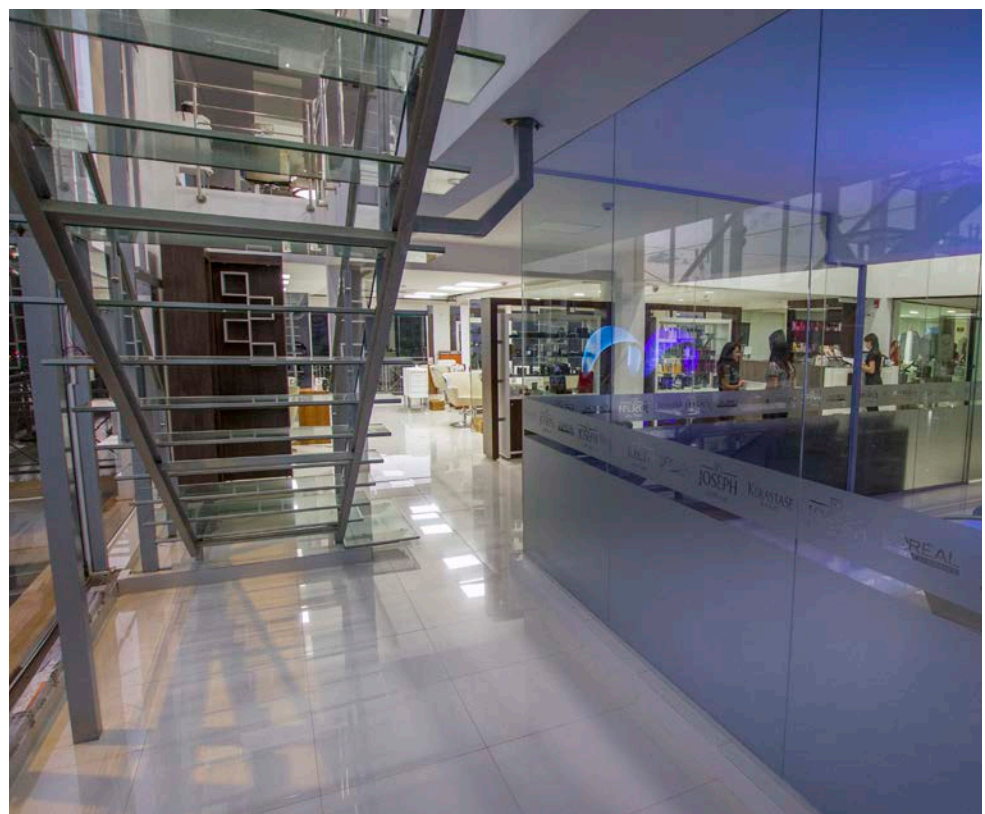
JOSEPH COIFFURE PARAGUAY

STYLING CHAIR
Angelina

STYLING UNITS
Helena 2

WASH UNITS
Luxor Soft

TROLLEY
Manhattan







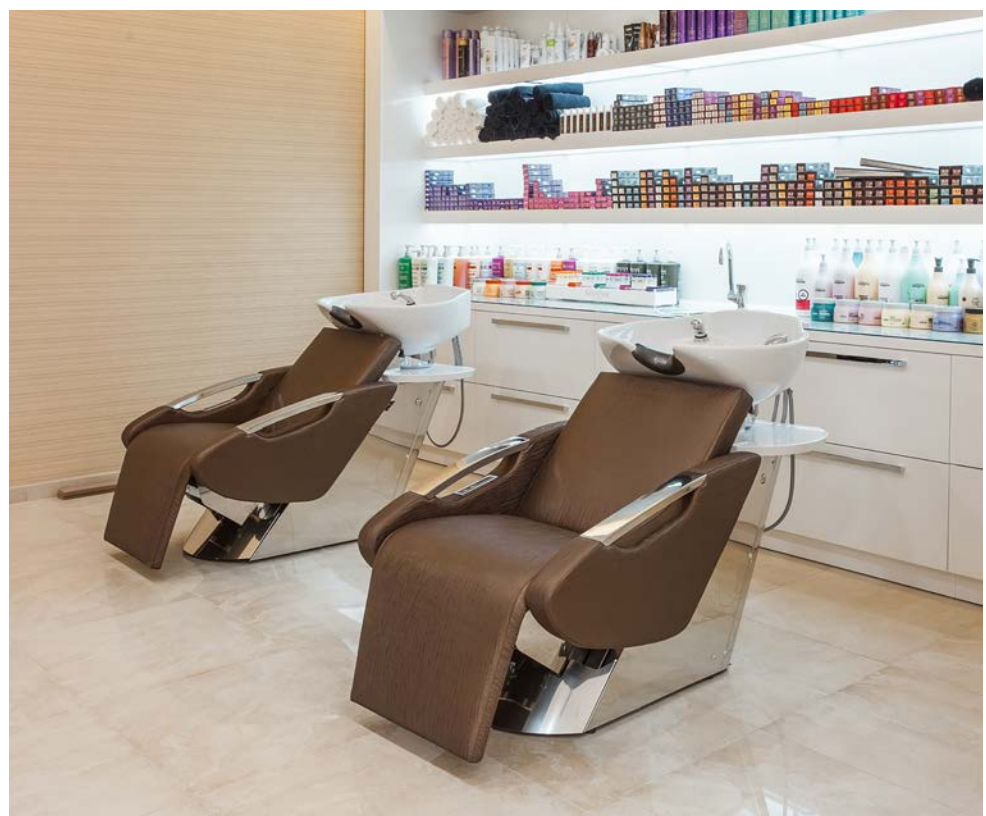
60

ACQUATERRA BEAUTY HAIR STUDIO SALON CHISINAU, MOLDAVIA

STYLING CHAIR
Versailles

WASH UNIT
Zen

STYLING UNIT
Louise I







62

SALON KRAEMER PRESTIGE STRASBURGO, FRANCE

STYLING CHAIRS

Mimi
Pompadour

WASH UNITS

Sensor

TECHNICAL TABLE

Dauphin

MIRROR

Dauphin Mirror







64

SPA DIOS SÃO PAULO, BRAZIL

STYLING CHAIRS

Paloma
Green Hug

WASH UNITS

Bahamas
Shiatsu
Madre
Specific Hair Water System

TROLLEY

Manhattan







66

JACQUES JANINE
SÃO PAULO, BRAZIL

WASH UNITS
Kromo wash
Specific Hair Water System



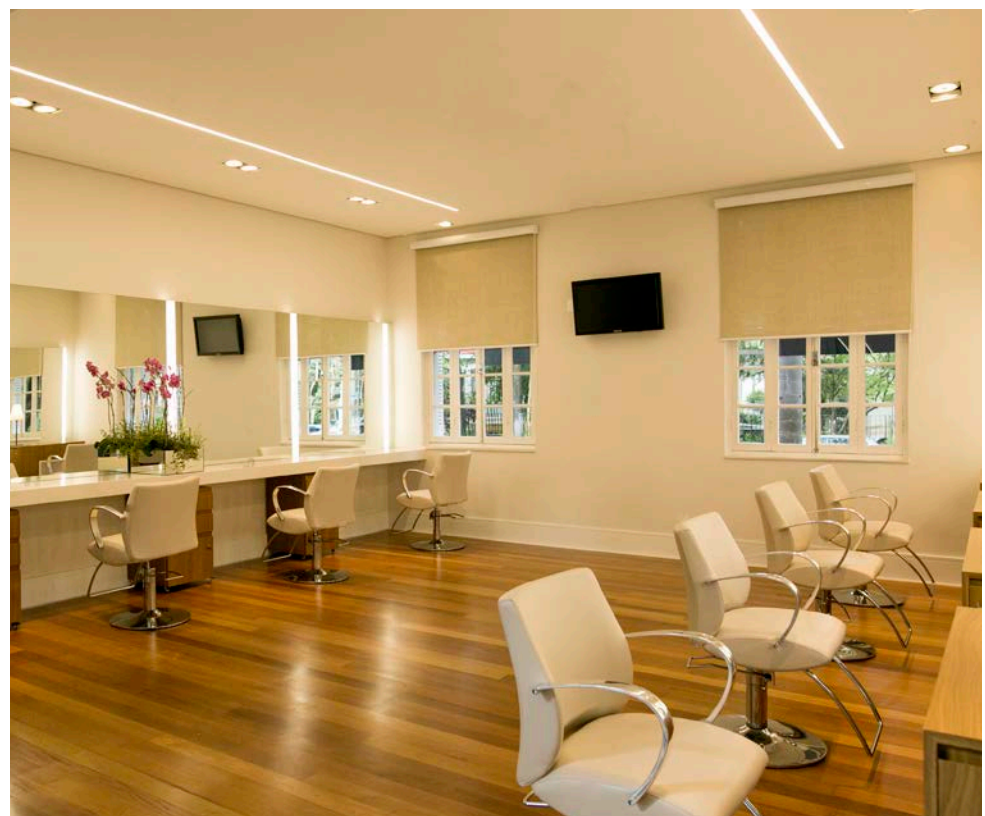


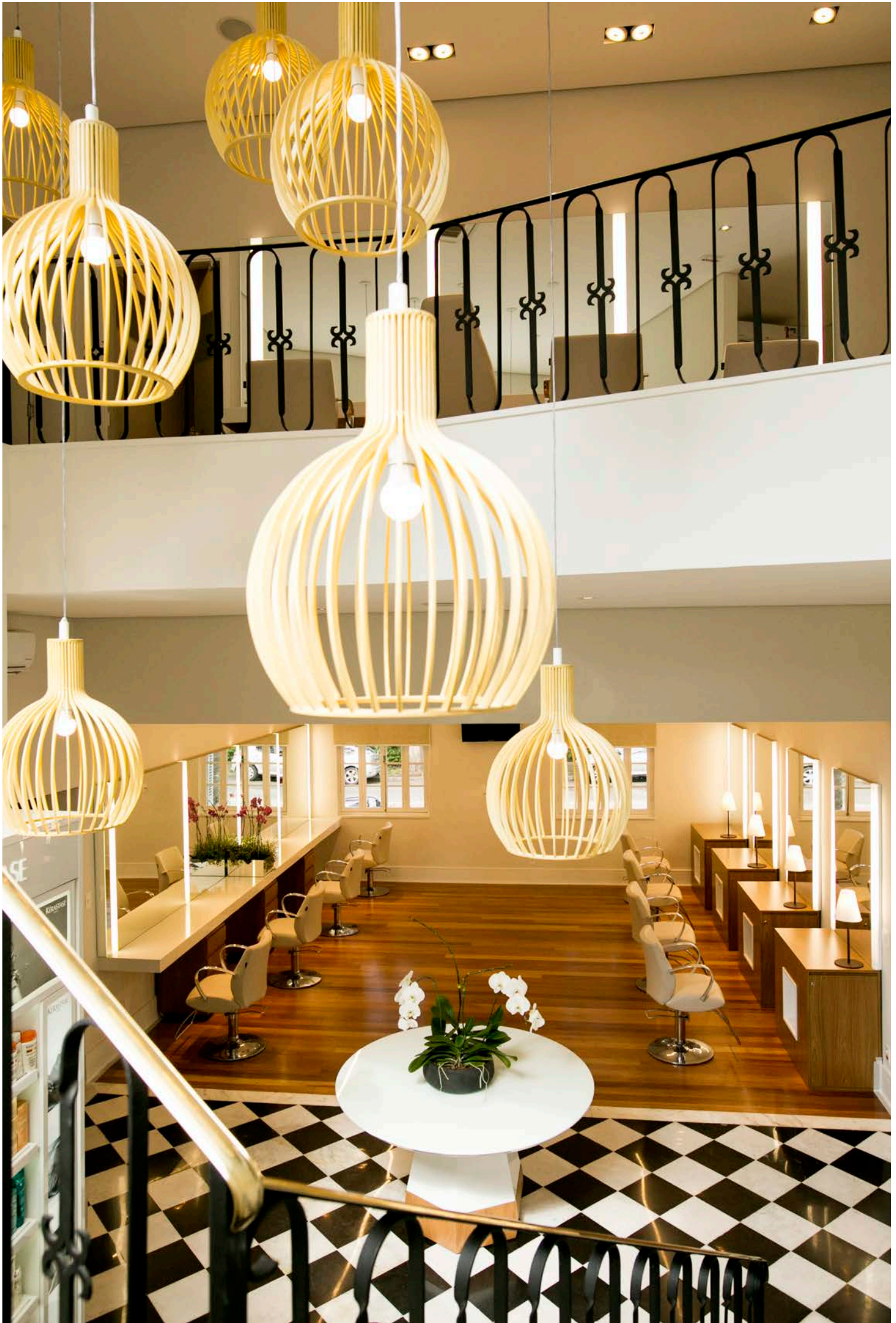


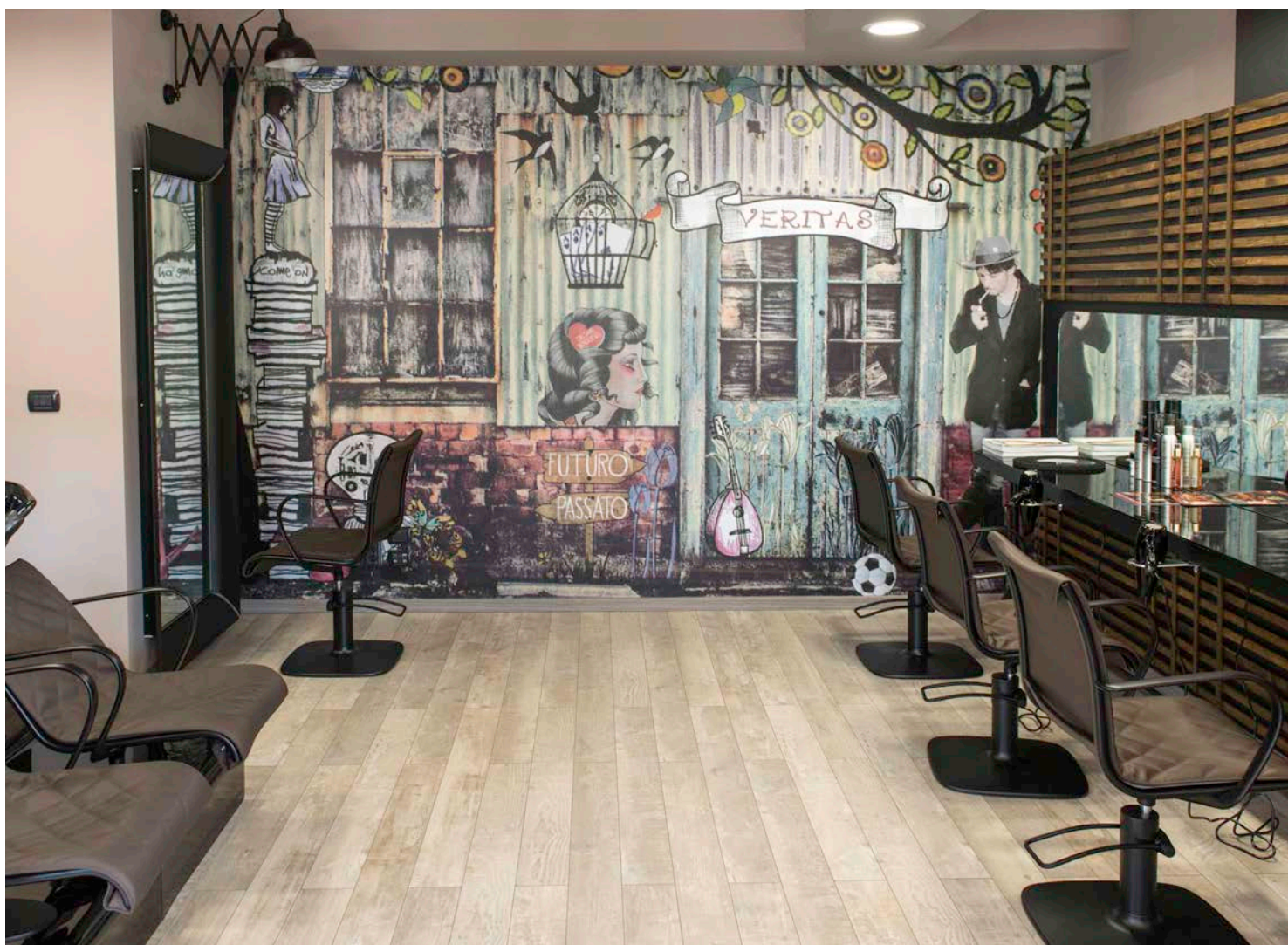
68

JACQUES JANINE
SÃO PAULO, BRAZIL

STYLING CHAIRS
Lioness







70

ALESSANDRO STREET HAIR SARZANA, ITALY

STYLING CHAIR
Alu Chair

STYLING UNIT
Alu Tech Wall
Caadre

WASH UNIT
Alu Wash





THE HAIR LAB

STYLING CHAIRS
Green Hug
Green Boomerang

FOOTREST
Green Footrest

STYLING UNIT
Atelier

WASH UNITS
Madre
Green Star Class





72

SALON NATALI
TBLISI, GEORGIA

STYLING CHAIRS
Modern
Eva

STYLING UNIT
Caadre

WASH UNITS
Dèluge 3
Bahamas

TROLLEY
Urban

TECHNICAL TABLE
Benoit

MIRROR
Marcello

BACKWASH CABINETS
Retro Light I
Retro Light II







74

NADIA CECCARELLI
ROMA, ITALY

STYLING CHAIRS
Eco Fun Chair
Angelina

WASH UNIT
Luxor Soft
Luxor Massage





INTERCOIFFEUR POCK
ST. JOHANN, AUSTRIA

STYLING CHAIR
Look

WASH UNIT
330





76

LA PROVENCE

CUIABA', BRAZIL...alle porte dell'Amazzonia...Amazzonia doors

STYLING CHAIR
Eufemia

STYLING CHAIR
FOR MEN
Zerbini 1906

WASH UNIT
Renata T.







78

ORIANA SPA
JEDDAH, ARABIA SAUDITA

STYLING CHAIR
Modern

WASH UNIT
Modern







80

SCISSOR HANDS OSTOZHENKA
MOSCOW, RUSSIA

STYLING CHAIR
Green Hug

WASH UNITS
Green Star Class
Specific Hair Water System

MASSAGE TABLE
Lavanda Well by NILO

STOOL
Timo by NILO







82

KAKADU
RUM, AUSTRIA

STYLING CHAIR
Angelina

STOOL
You

FOOTREST
Foot Dream

STYLING UNIT
Steve

WASH UNIT
Luxor





HOTEL DREAMS LA ROSA DE BAYAHIBE
LA ROMANA, DOMINICAN REPUBLIC

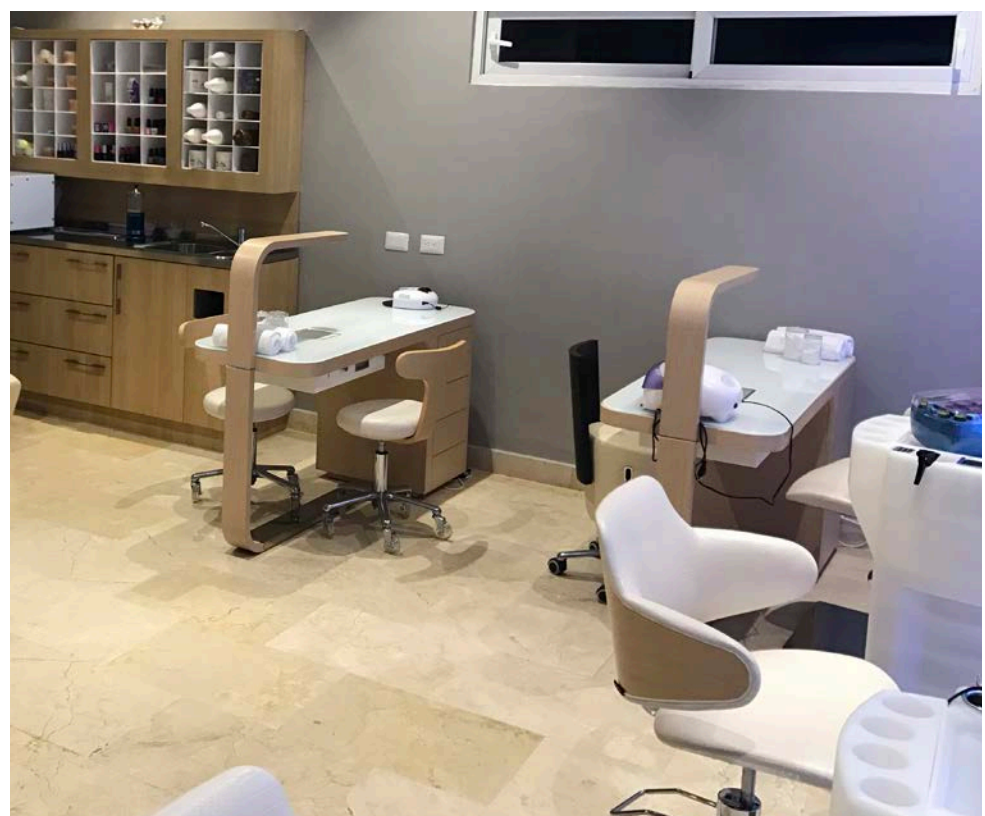
STYLING CHAIRS
Green Hug

FOOTREST
Green Footrest

STYLING UNIT
Atelier

MANICURE
Hibiscus

STOOL
Aloe





84

SK STUDIO
SRA KATTIA, CILE

STYLING CHAIR
Katy

WASH UNIT
Bahamas





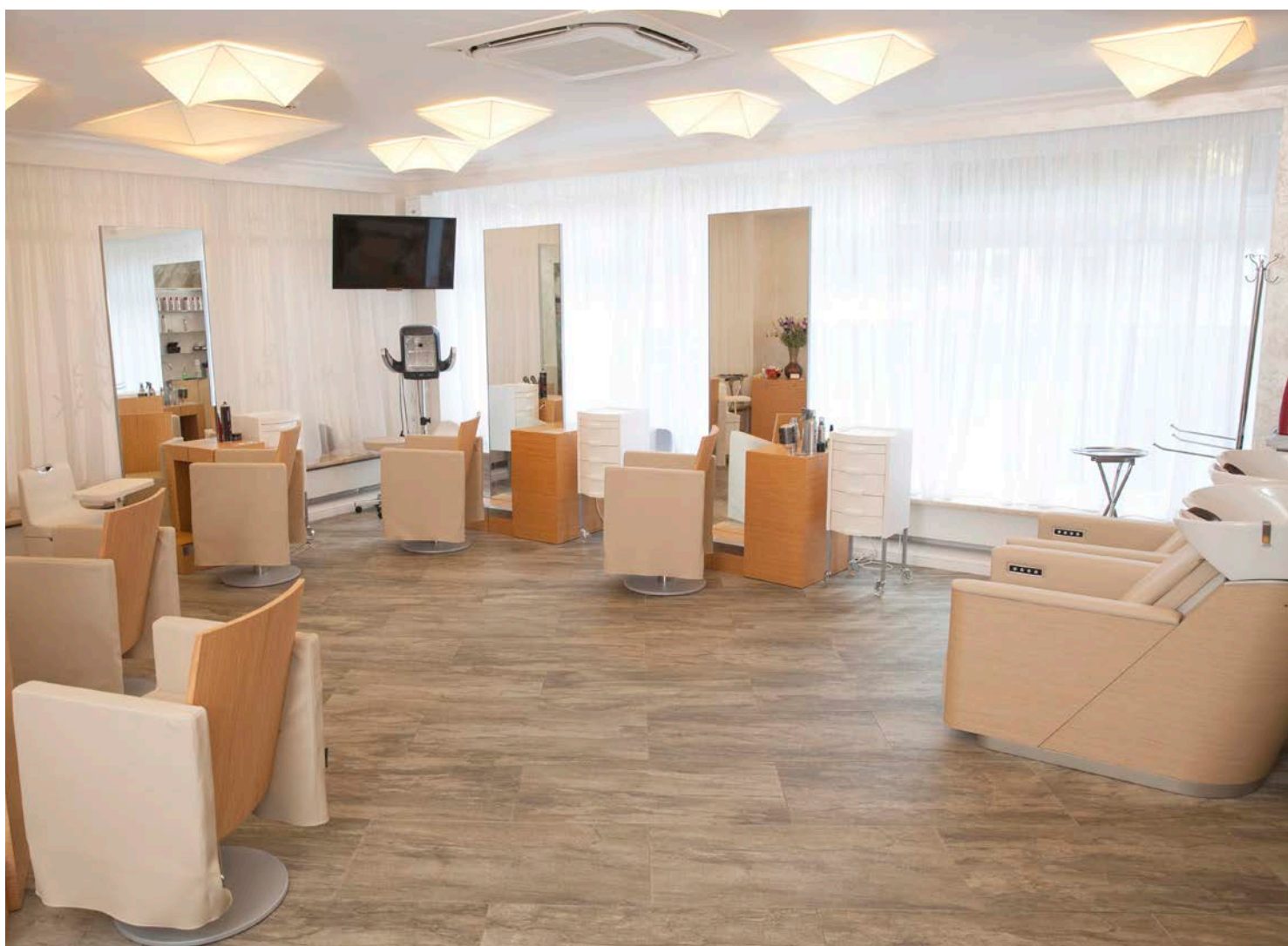
HAARMONIE
BERTZ, GERMANY

STYLING CHAIR
Angelina

STYLING UNIT
Caadre

WASH UNIT
Luxor
Specific Hair Water System





86

MAYMAK BEAUTY SALON MOSCOW, RUSSIA

STYLING CHAIR
Petra

STYLING UNIT
Helena

WASH UNIT
Green Star Class

TROLLEY
Manhattan





FRISEURSALON HAUER
FERLACH, AUSTRIA

STYLING CHAIR
Versailles

WASH UNIT
330





88

ALTER EGO LIMA, PERÙ

STYLING CHAIR
Camelia
Lioness rec.

TROLLEY
Manhattan

STYLING UNIT
Caadre

WASH UNIT
Madre





ATELIER KATARZYNA KLIM
SZCZECIN, POLAND

89

STYLING CHAIR
Mimi

WASH UNIT
Zen

BACKWASH CABINET
Mistral



RIVIERA PARK HOTEL
BELGOROD, RUSSIA

STYLING CHAIRS
green hug

STYLING UNIT
Eclipse 2

TROLLEY
Manhattan

NAIL
Baby







FRANCHISING





94

FRANK PROVOST PRAGUE, CZECH REPUBLIC

STYLING CHAIRS

Mimi
Eufemia
Musette

STYLING UNITS

Rodolfo Double
Breda Wall

RECEPTION

Ouverture

TECHNICAL TABLE

Colline

MIRROR

Marcello





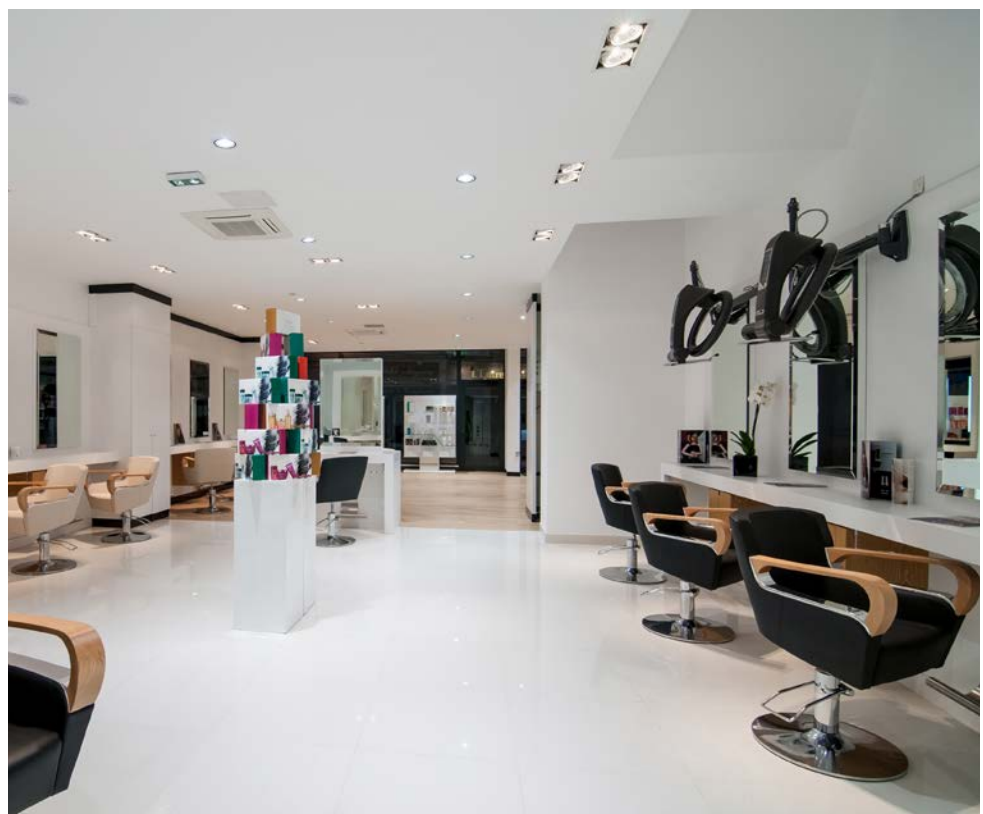


96

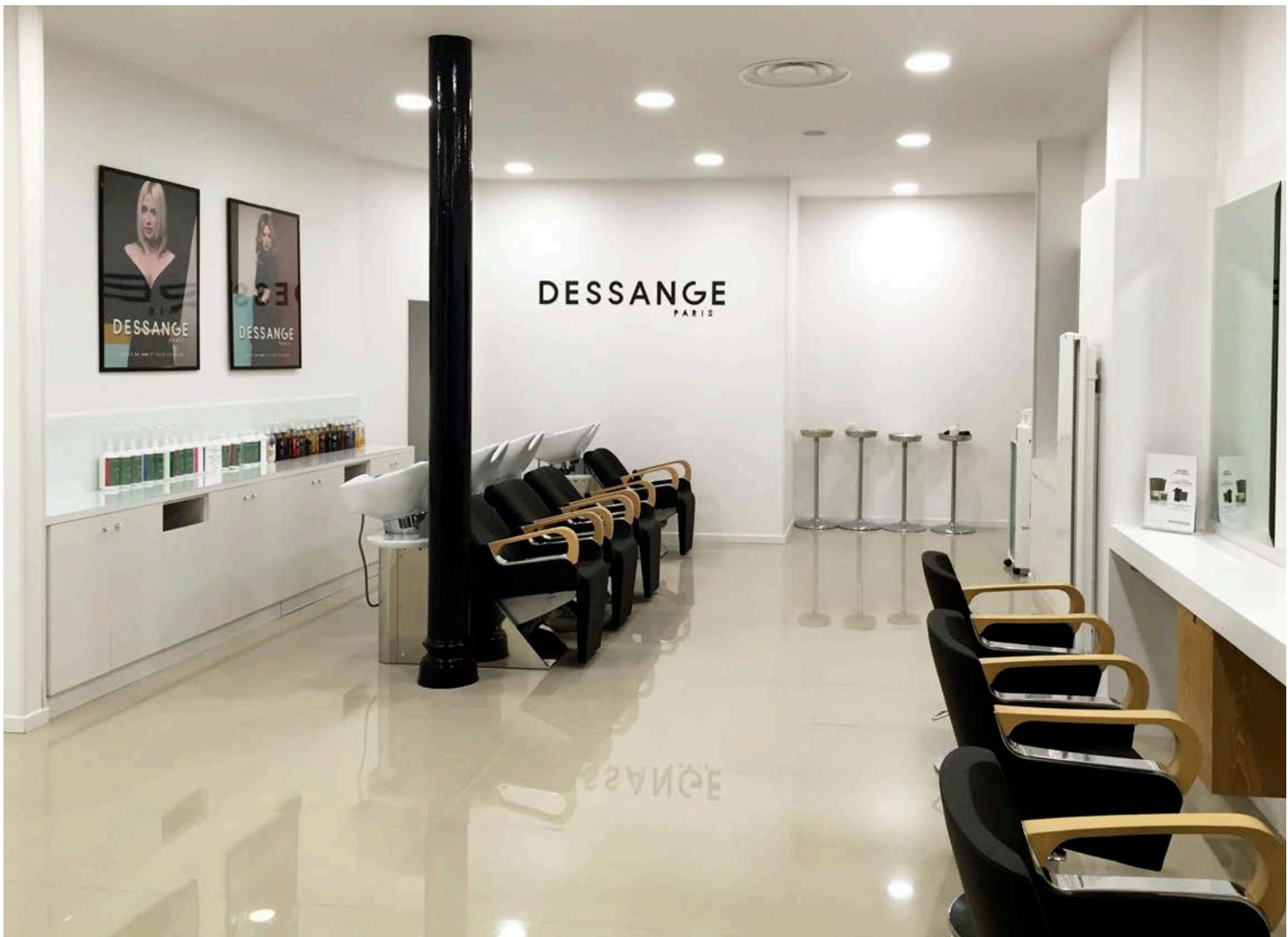
DESSANGE
CHATEAUROUX, FRANCE

STYLING CHAIR
"Celie" for Dessange

WASH UNIT
"Grace" for Dessange







98

DESSANGE
BEZIÉRS, FRANCE

STYLING CHAIR
"Celie" for Dessange

WASH UNIT
"Grace" for Dessange





DESSANGE
PAU, FRANCE

STYLING CHAIR
"Celine" for Dessange

WASH UNIT
"Grace" for Dessange





100 **ION Studio**
NEW YORK, USA

STYLING CHAIR
Green Boomerang

WASH UNIT
Bahamas Plus





"BY CREATING BEAU
OF THE ENVIRONM



102

PROVALLIANCE GROUP / **FABIO SALSAL**
BAGNOLET, FRANCE

STYLING CHAIR
Morpheus for Fabio Salsa

WASH UNIT
Morpheus Lion Plus
for Fabio Salsa

STYLING UNITS
Giano for Fabio Salsa



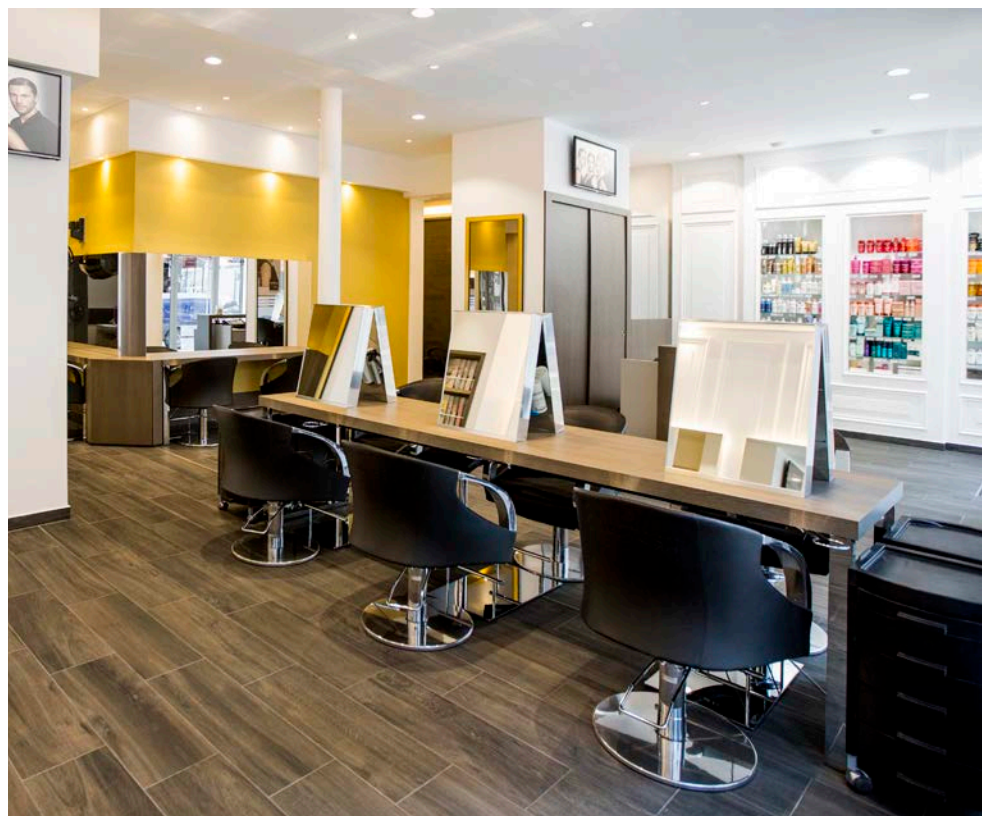


PROVALLIANCE GROUP / **FRANK PROVOST**
REZE OCEAN, FRANCE

103

STYLING CHAIR
WASH UNIT
STYLING UNITS

exclusively for Frank Provost





104

PROVALLIANCE GROUP / **INTERMEDE**
BOE, FRANCE

STYLING CHAIR
Caruso for Intermede

STYLING UNITS
exclusively for Intermede



PROVALLIANCE GROUP / **JEAN LOUIS DAVID**
MONT FAVET, FRANCE

STYLING CHAIR
WASH UNIT
STYLING UNITS

exclusively for Jean Louis David





106

TONI&GUY
SHOREDITCH, GREAT BRITAIN

STYLING CHAIR
Paloma



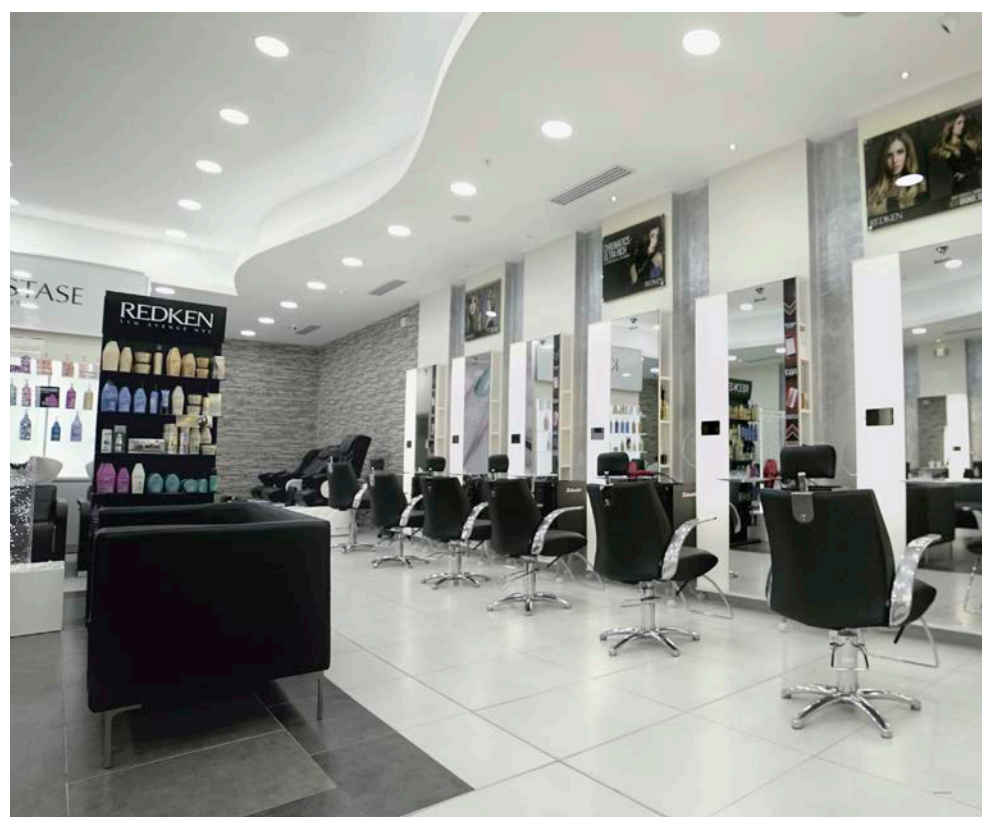


SALVADOR
PANAMA, PANAMA

STYLING CHAIR
Lioness El Rec

**STYLING CHAIR
FOR MEN**
Sporting

STOOL
Ring





108

ROSSANO FERRETTI
LONDON, GREAT BRITAIN

STYLING CHAIR
Modern

WASH UNIT
Modern





COMPAGNIA DELLA BELLEZZA
CATANIA, ITALY

STYLING CHAIR
Lioness El

STYLING UNIT
Louise I
Louise II

TECHNICAL TABLE
Dauphin

FOOTREST
Madame

WASHUNIT
330





110

AVEDA SALON
DUBAI, UNITED ARAB EMIRATES

STYLING CHAIR
Green Hug

FOOTREST
TT

WASHUNIT
Shiatsu

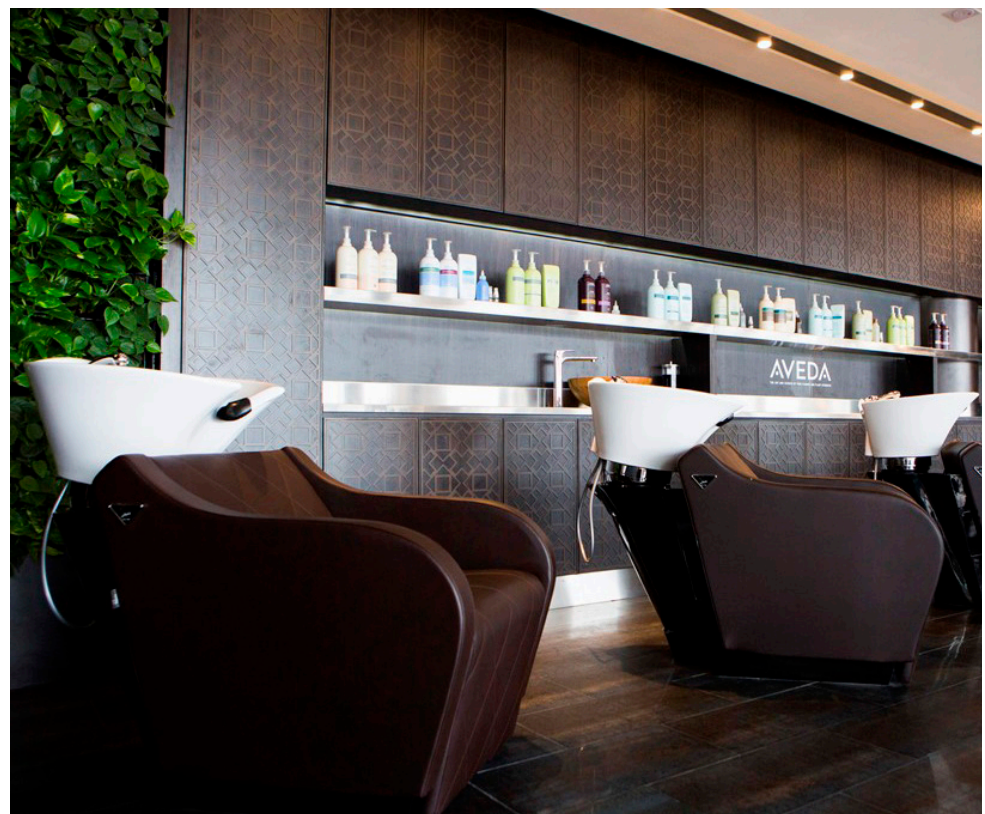




AVEDA GALLERIA MALL
DUBAI, UNITED ARAB EMIRATES

STYLING CHAIR
Green Hug

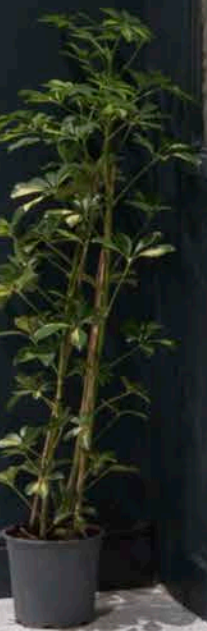
WASH UNIT
330



dal barbiere



BARBER SHOP

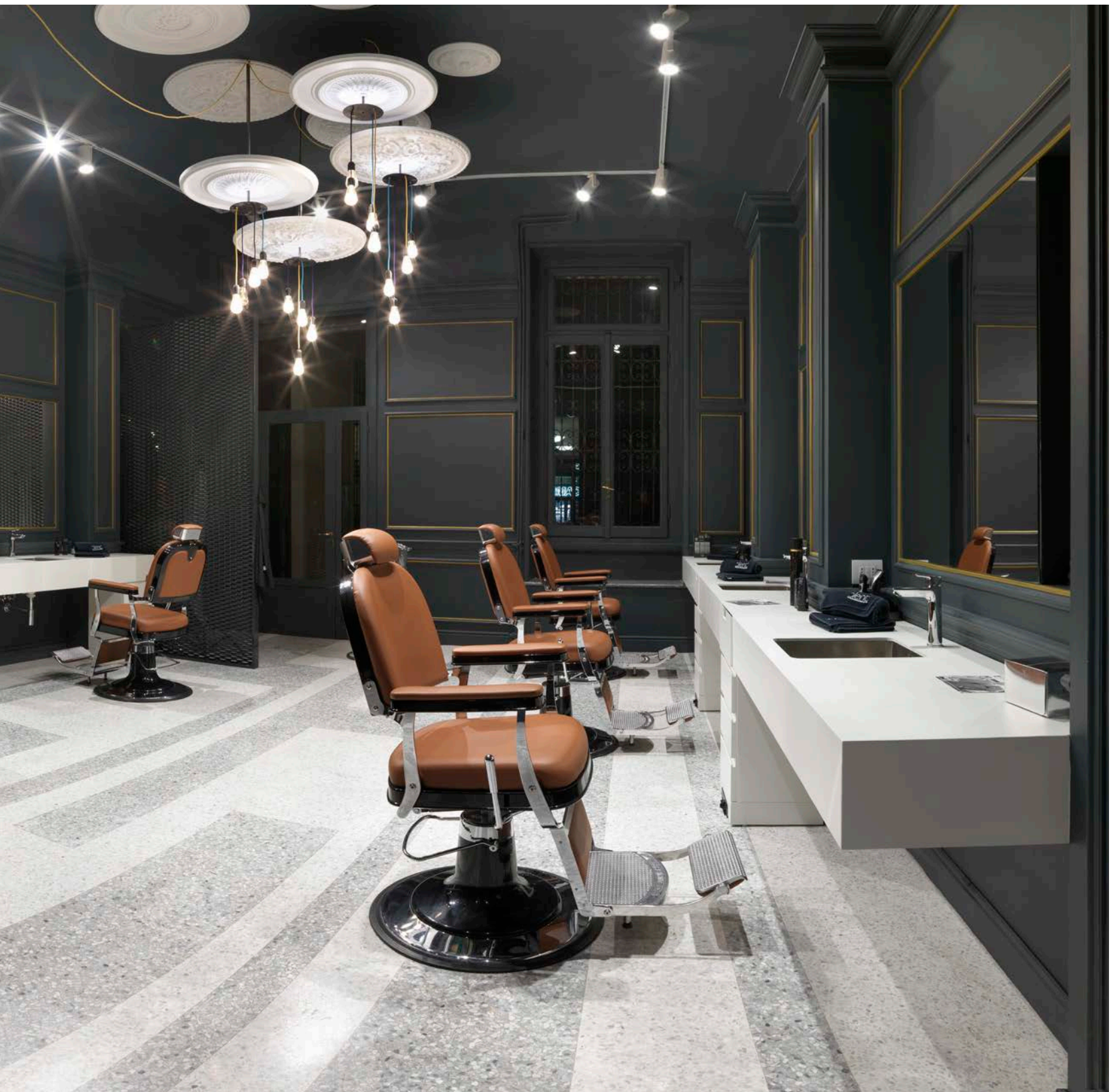


BLEND
MILAN, ITALY

**STYLING CHAIR
FOR MEN**
Zerbini 1906

WASH UNITS
Dèluge I





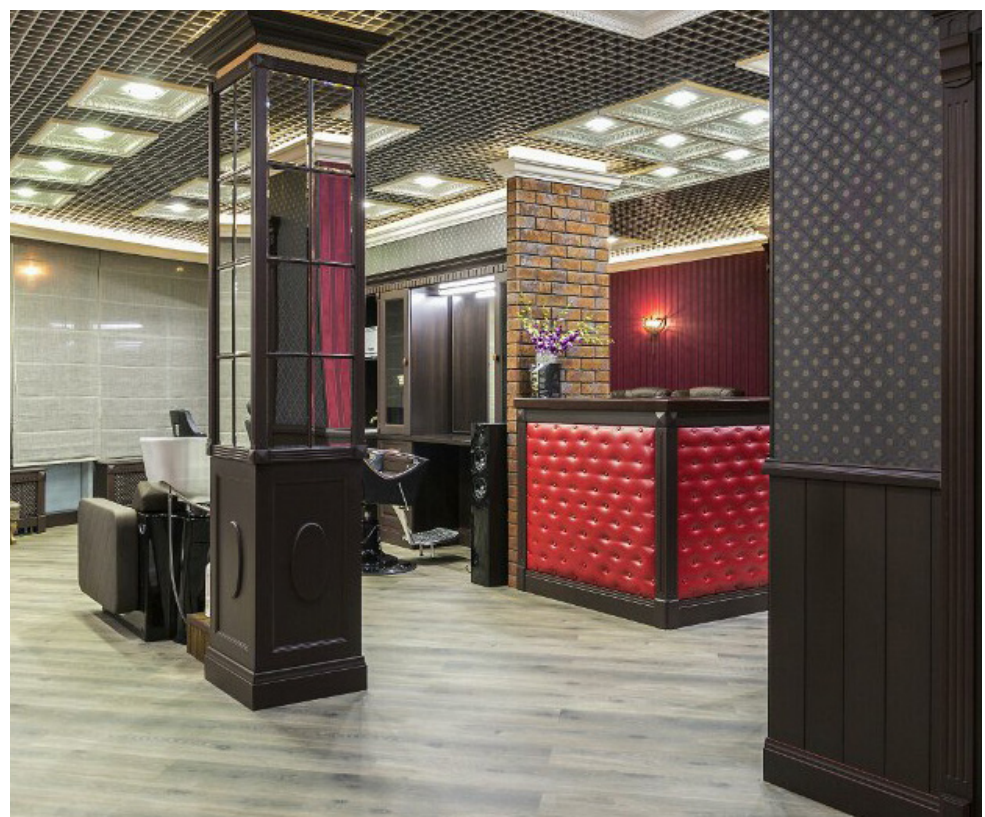


116

CIRULNIK-MAESTRO
ODINTSOVO, RUSSIA

STYLING CHAIR
sporting

WASH UNIT
sensor







MILANO: BRANCH

MALETTI MILANO
Via Savona, 97
20144 Milano
+39 02 4236590
info@malettigroup.com
www.malettigroup.com



BRAZIL: BRANCH

MALETTI CABO HORN
Rua Conselheiro Furtado, 842
Bairro: Liberdade – CEP: 01511-000
São Paulo/SP
Tel: 11 5567 1088
vendas@maletti.com.br
www.maletti.com.br



FRANCE: BUREAU DE LIAISON

MALETTI FRANCE
9 Rue Royale
75008 Paris
+33 14 5615 377
+33 14 56 15 378
info@maletti.fr



PERÙ

MALETTI PERÙ
Calle General Borgono 581
Miraflores - Lima
+51 992 825620
+ 51 12420590
Gianluca Baso
gianluca@malettiperu.com
www.maletti.pe



UK: BRANCH

MALETTI UK
91 Brick Lane
E1 6QL London
+44 (0)20 32072032
info@maletti.co.uk



ESPANA

MALETTI MADRID
Plaza Dr. Laguna 13
28009 Madrid
info@maletti.es
+39 327 9378525



GERMANY: BRANCH

MALETTI DEUTSCHLAND
Klosterstrasse 49
40211 Düsseldorf
+49 21 598 281 670
+49 1 737 177 592
info@maletti.de
www.maletti.de



HEADQUARTER

MALETTI GROUP
PIAZZALE GUERRINO MALETTI, 1
42019 SCANDIANO (RE) - ITALY
TEL. +39 0522 7631
FAX +39 0522 983344
INFO@MALETTIGROUP.COM
WWW.MALETTIGROUP.COM



Design in Hairstyling and SPA Worlds